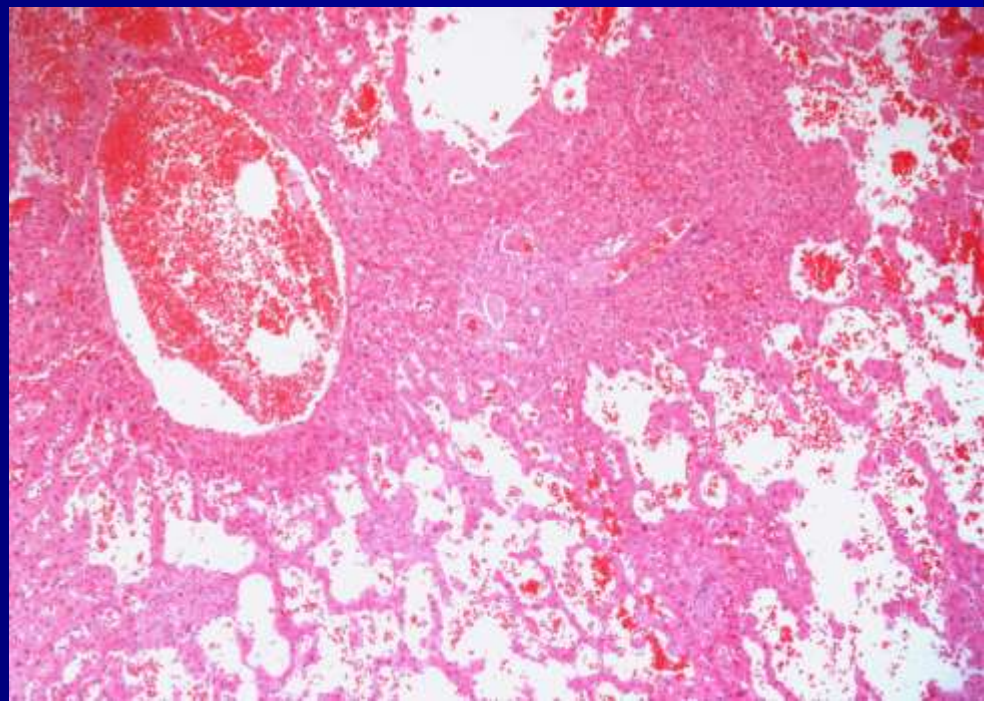
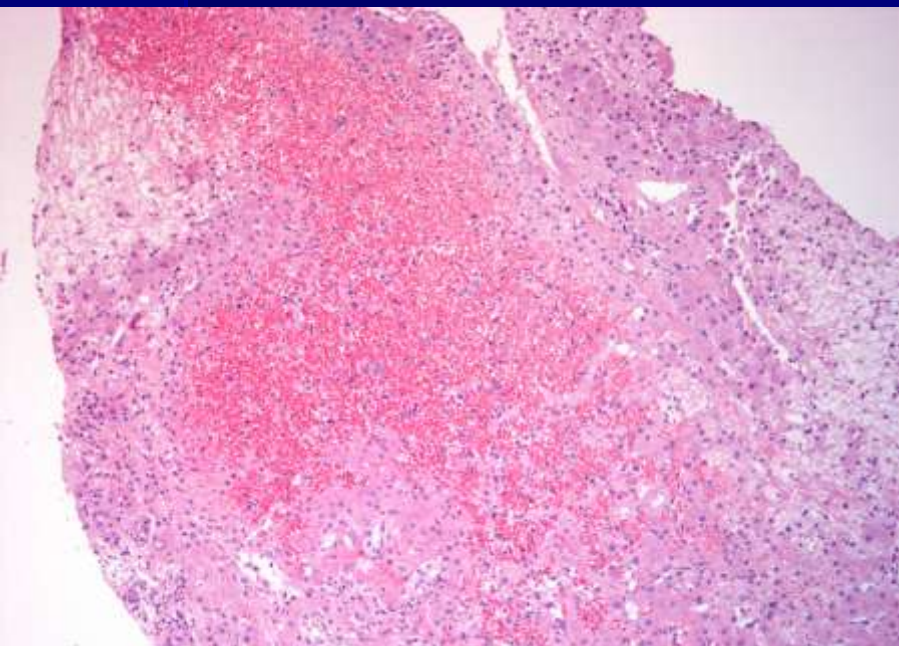
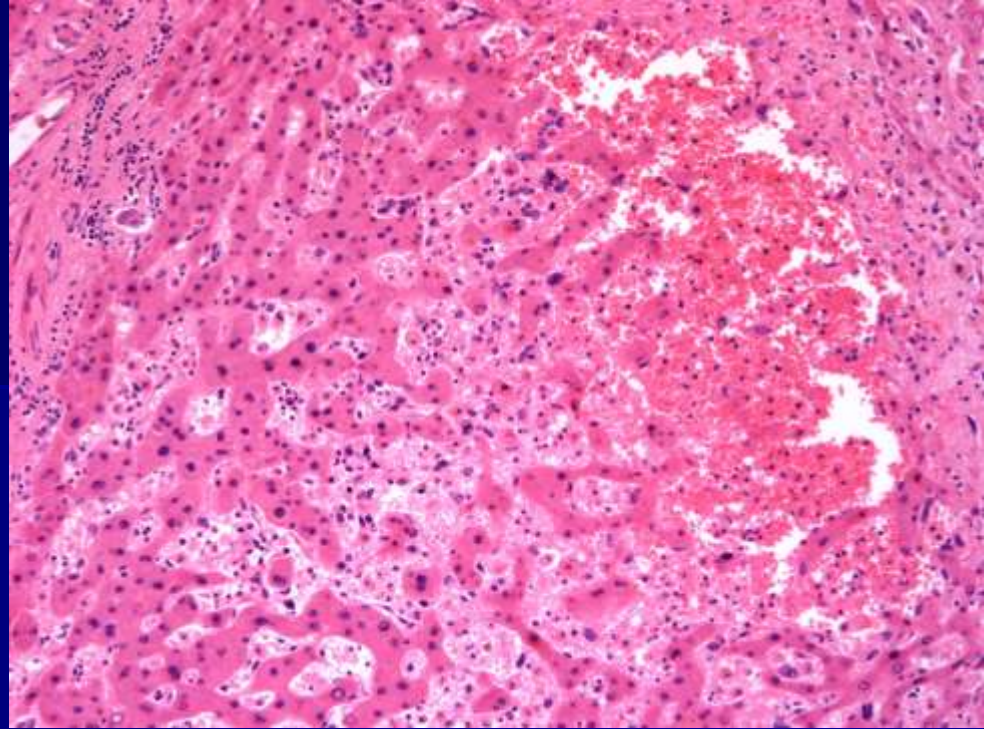
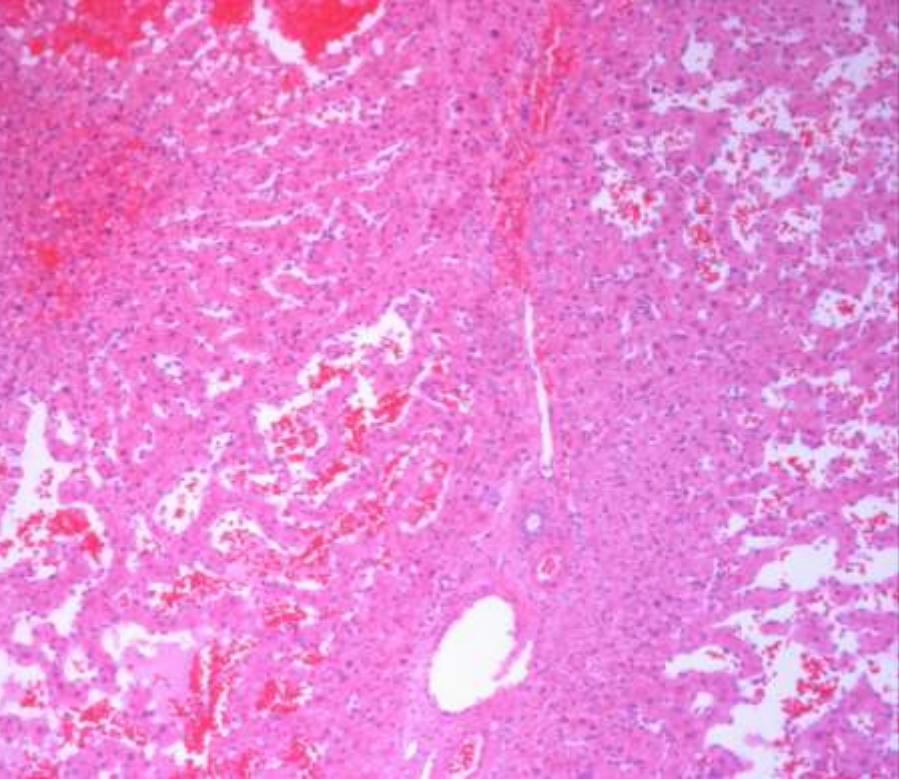
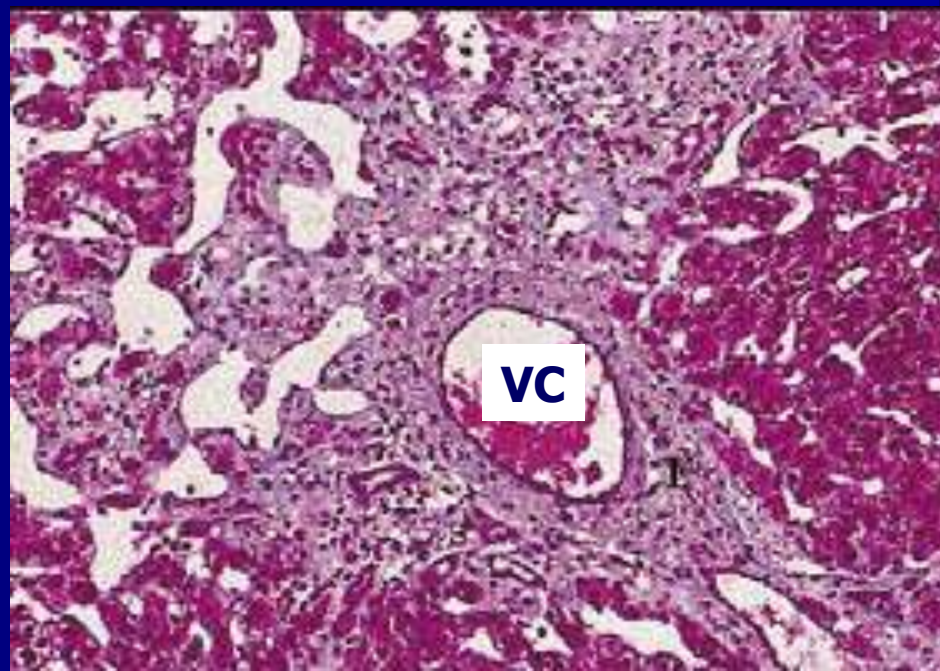
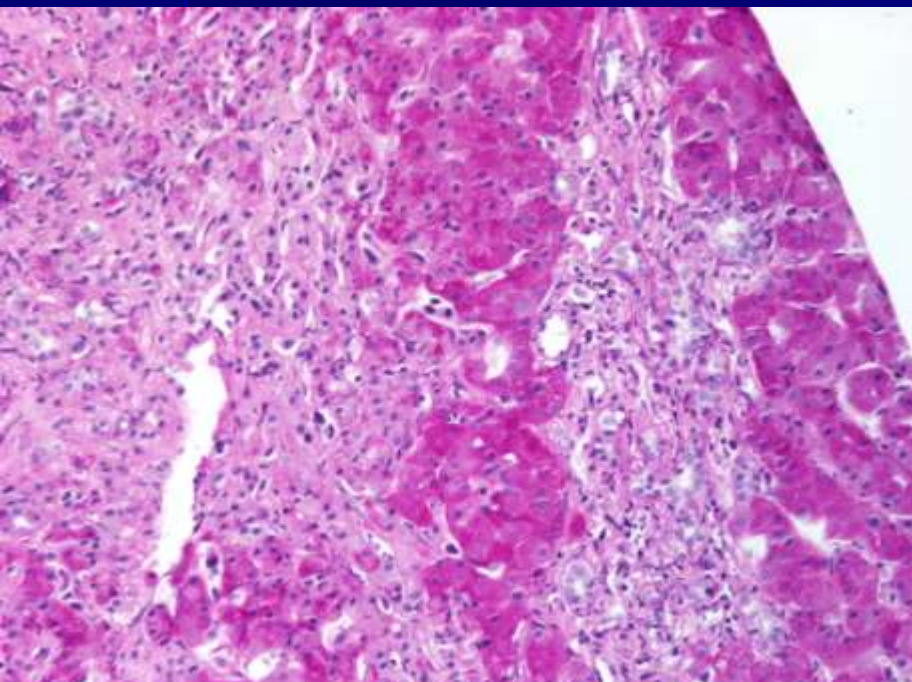
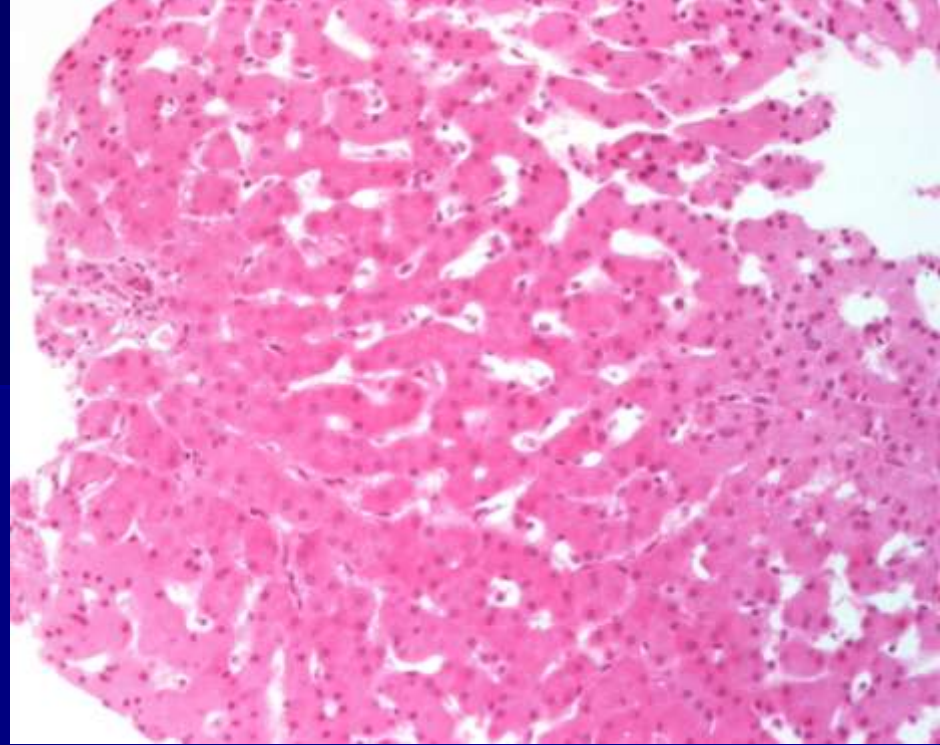
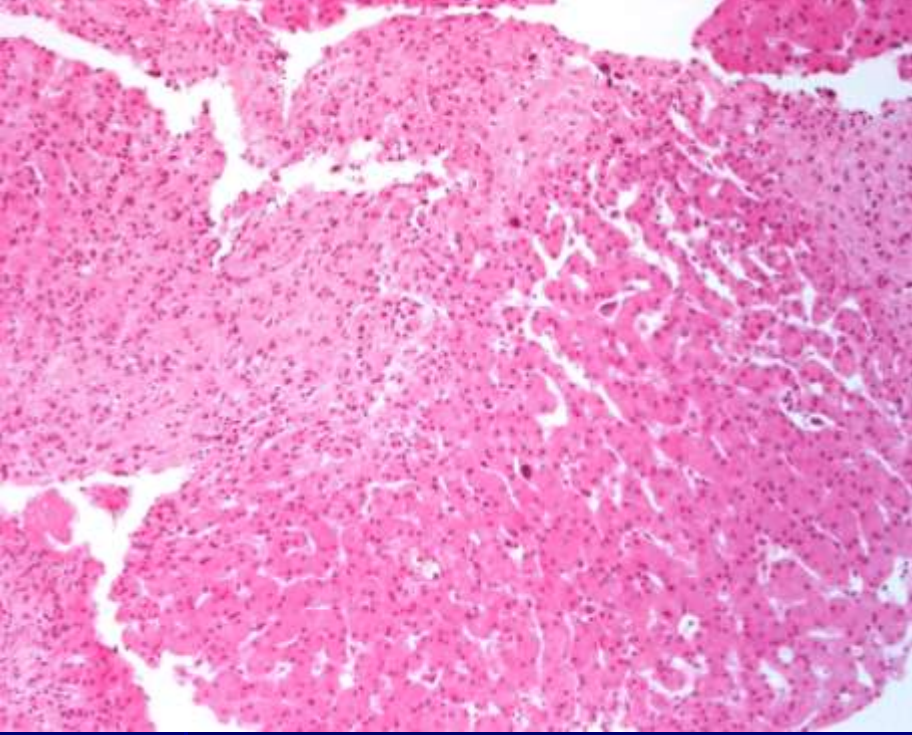


Resumen clínico

- Hombre de 19 años
- Presentó 3 años antes aumento de volumen abdominal con red venosa colateral.
- Hepatomegalia, ascitis y várices esofágicas
- PFH ligeramente alteradas
- RM y cateterismo transyugular: síndrome de Budd-Chiari.
- Se tomó biopsia hepática transyugular



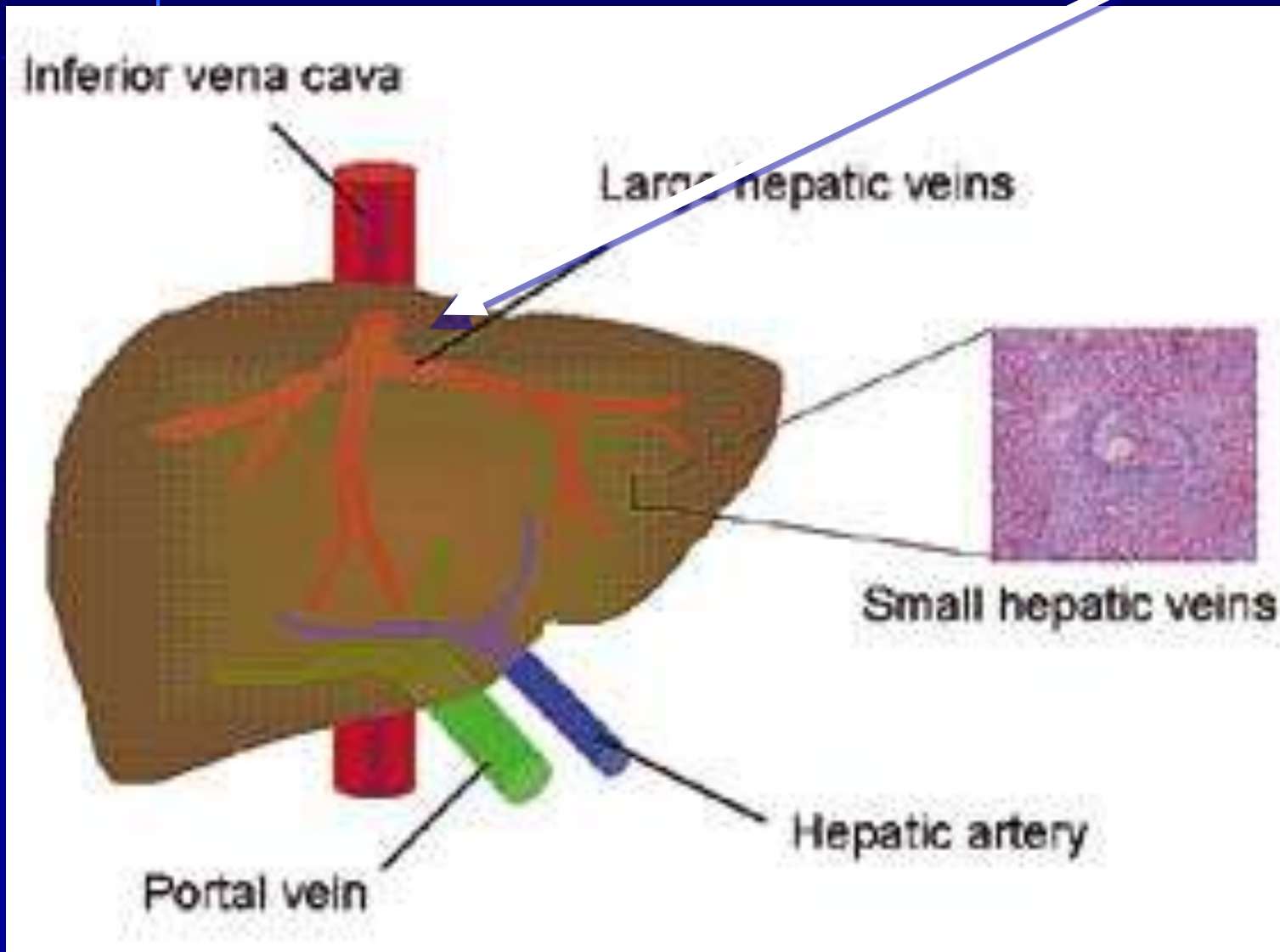


Diagnóstico

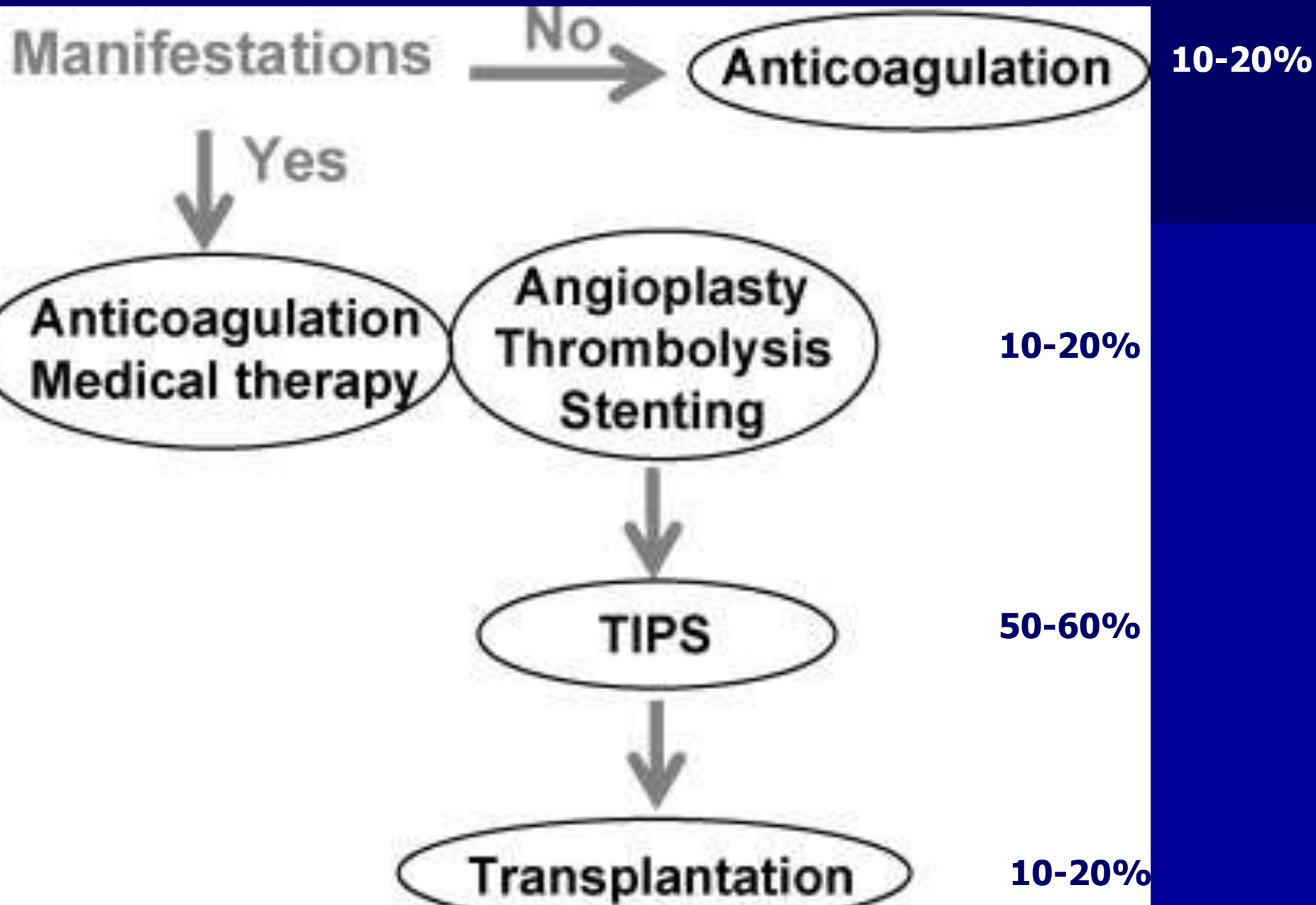
- **Biopsia hepática transyugular:**

Alteraciones histológicas compatibles
con síndrome de Budd-Chiari

Budd-Chiari



**Enfermedad
veno-oclusiva**

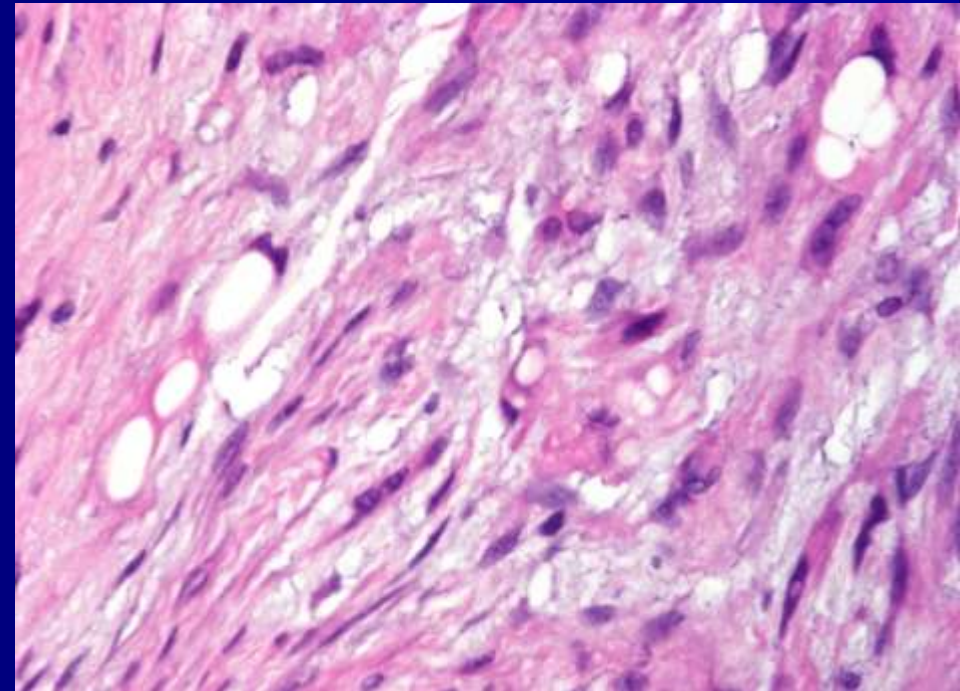
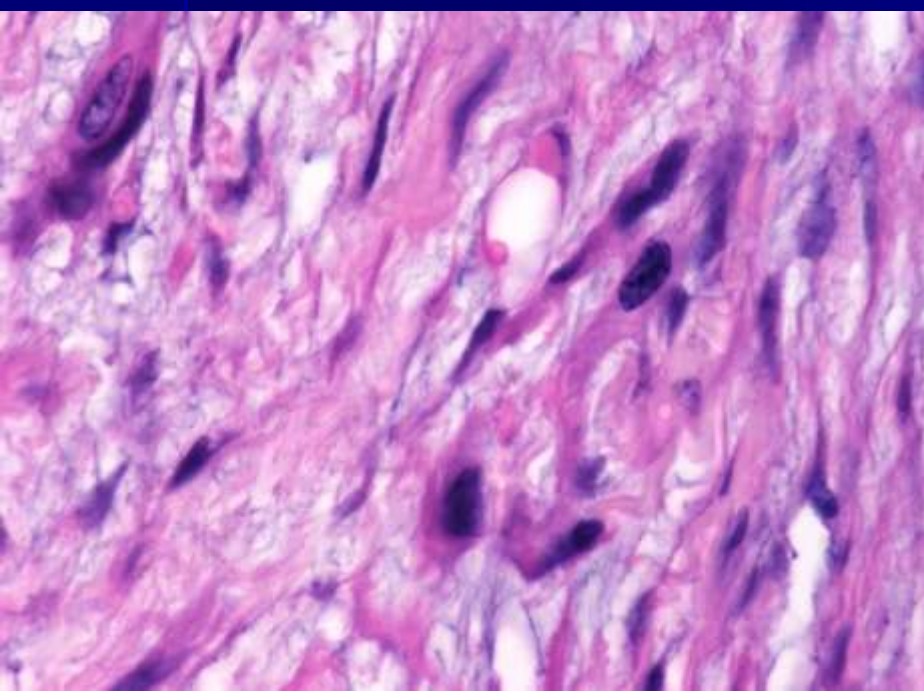
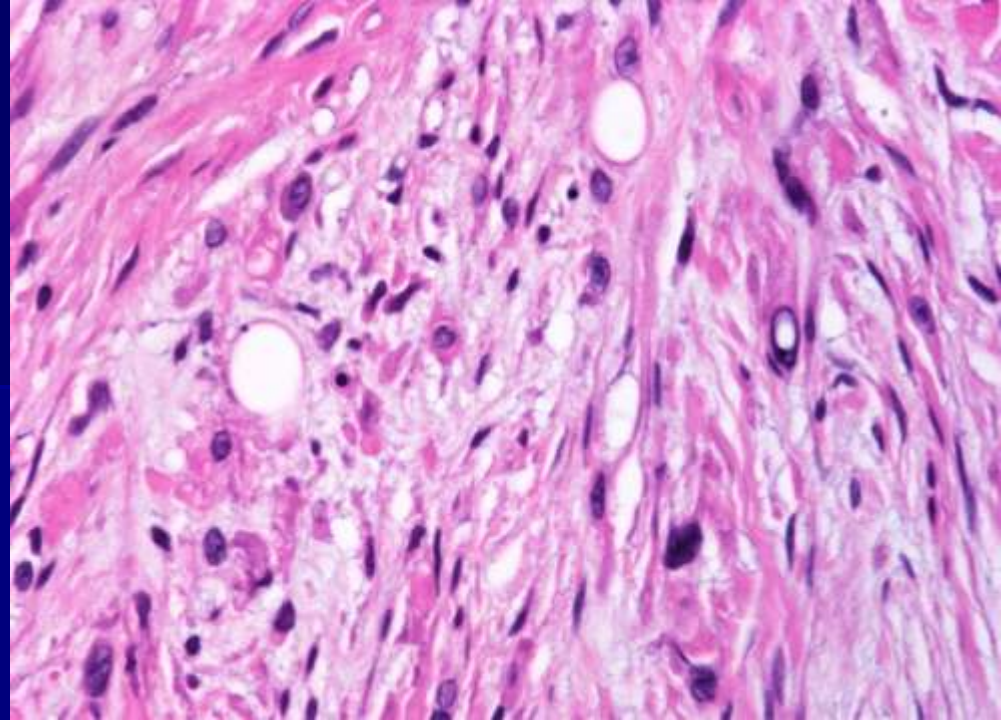
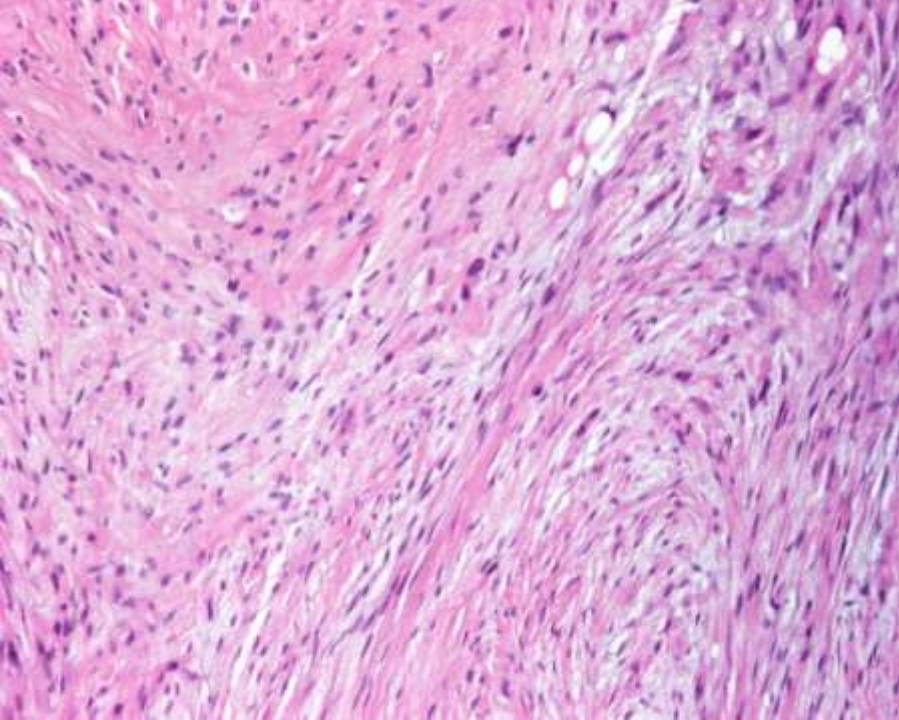


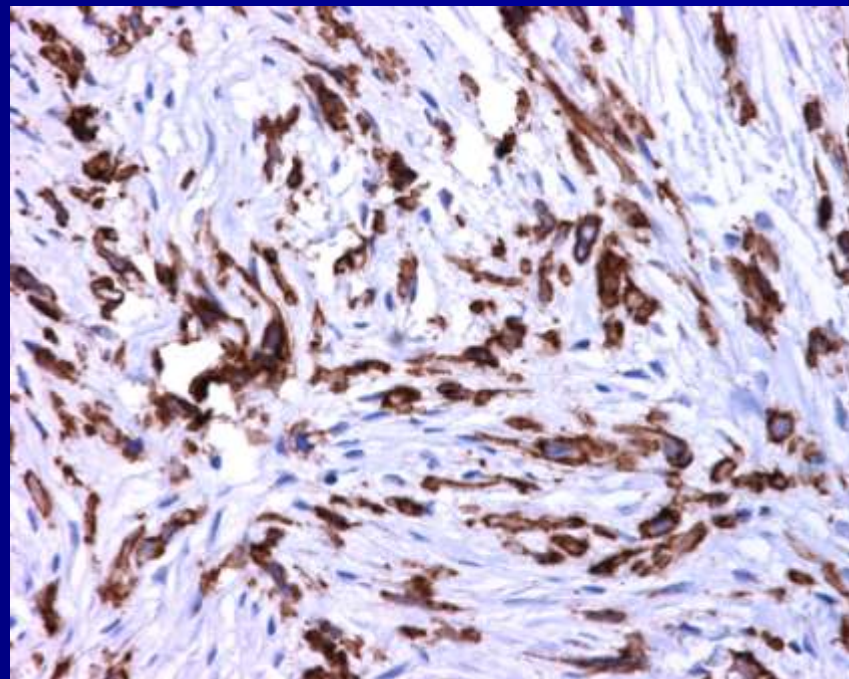
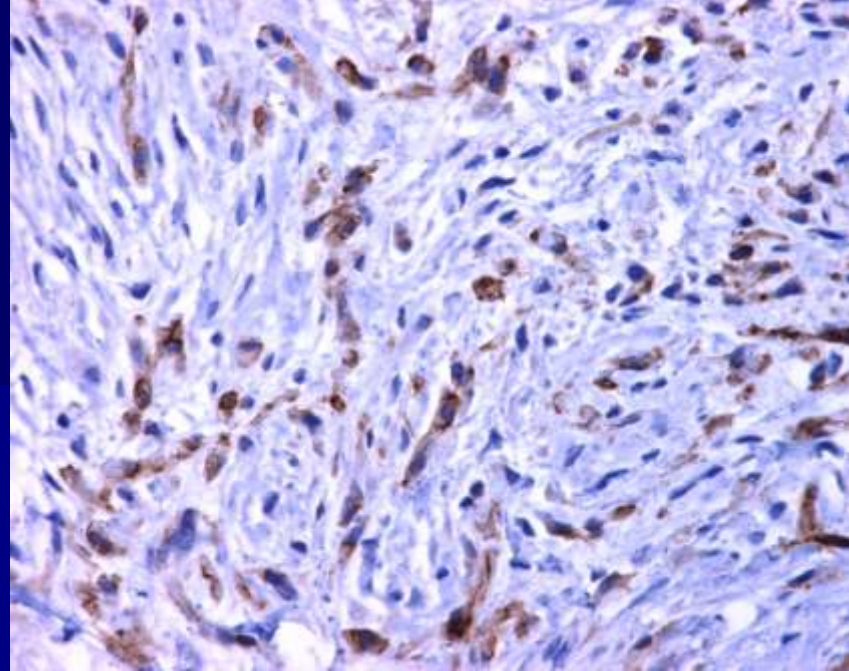
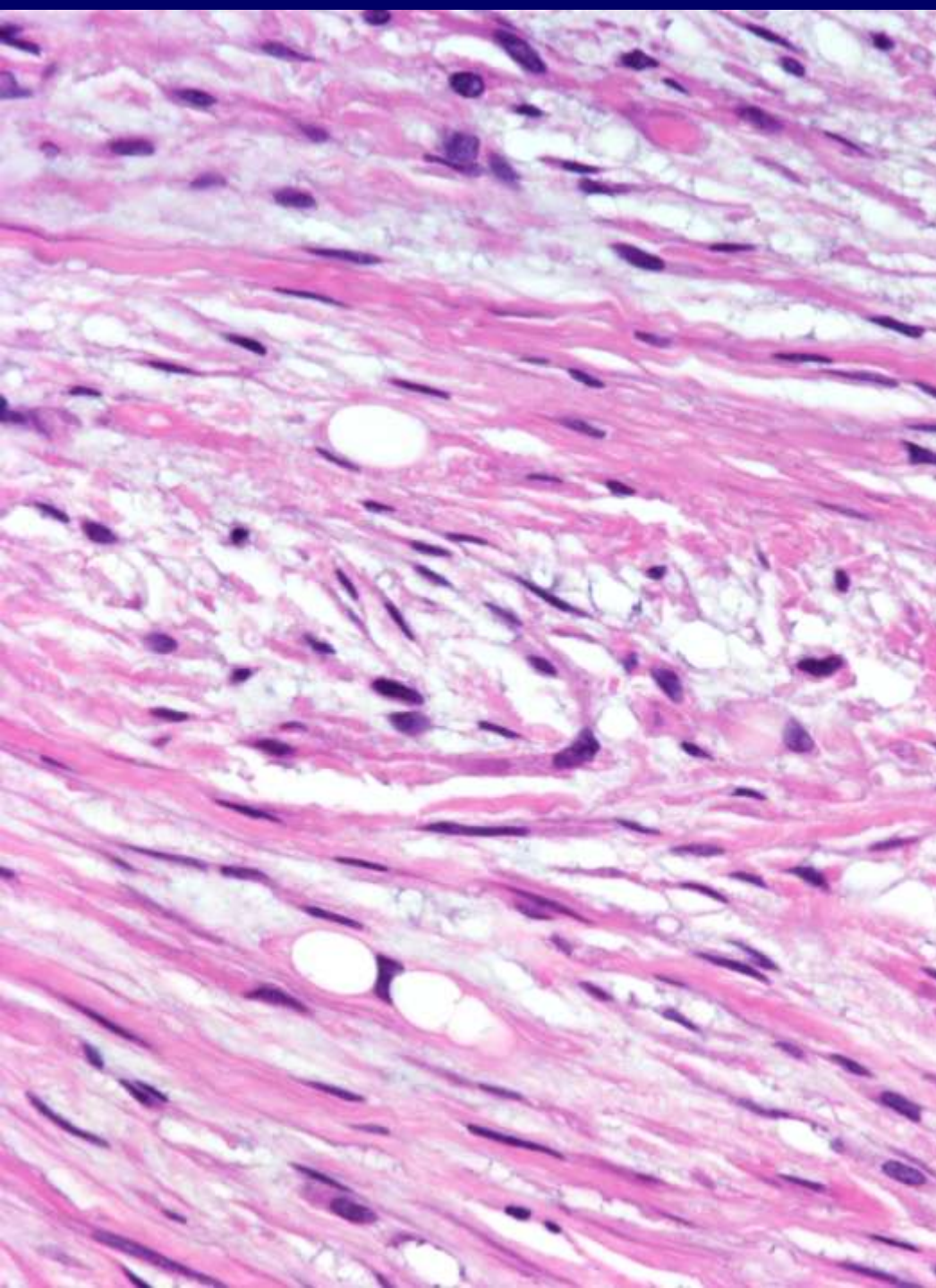
Evolución

- Se colocaron TIPS (transjugular intrahepatic portosystemic shunt)
- Disminución de flujo transTIPS
- Angioplastia infructuosa
- Desarrolló encefalopatía hepática
- Se incorporó al programa de trasplante hepático

Evolución

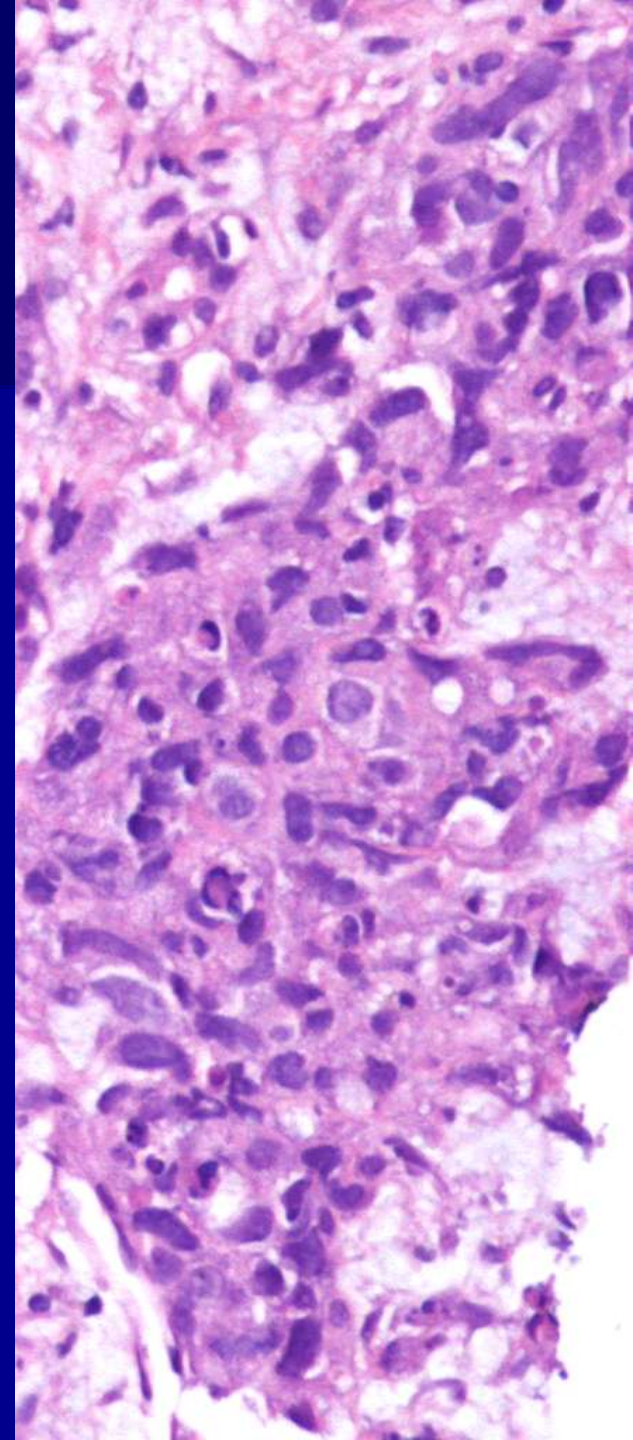
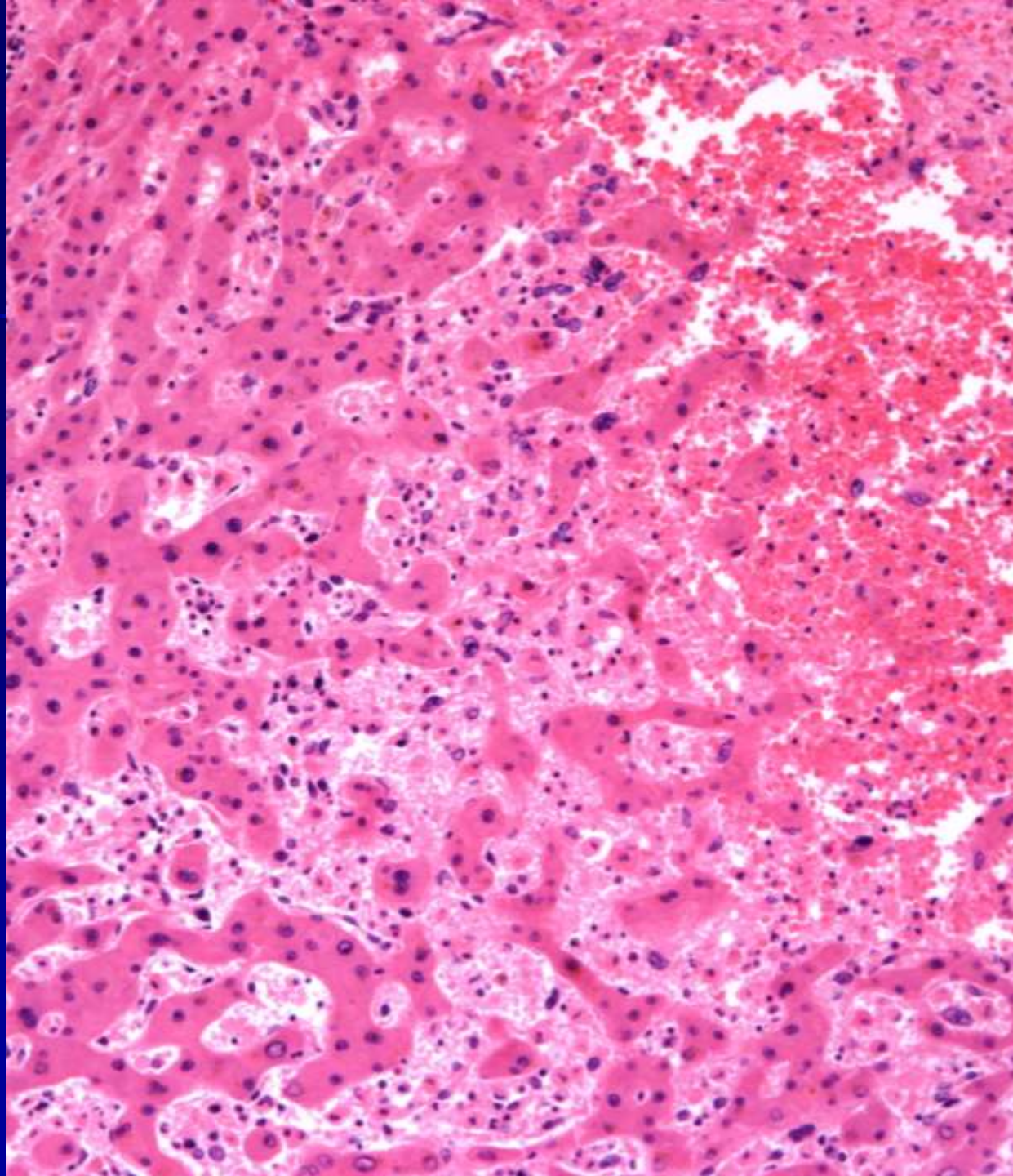
- Durante el intento de trasplante ortotópico se detectaron nódulos peritoneales y en la cápsula hepática por lo que se suspendió el procedimiento
- Desarrolló tromboembolias pulmonares, sepsis y falleció.





Diagnóstico

- **Hemangioendotelioma epitelioide hepático con metástasis en peritoneo**
- **Síndrome de Budd-Chiari secundario**

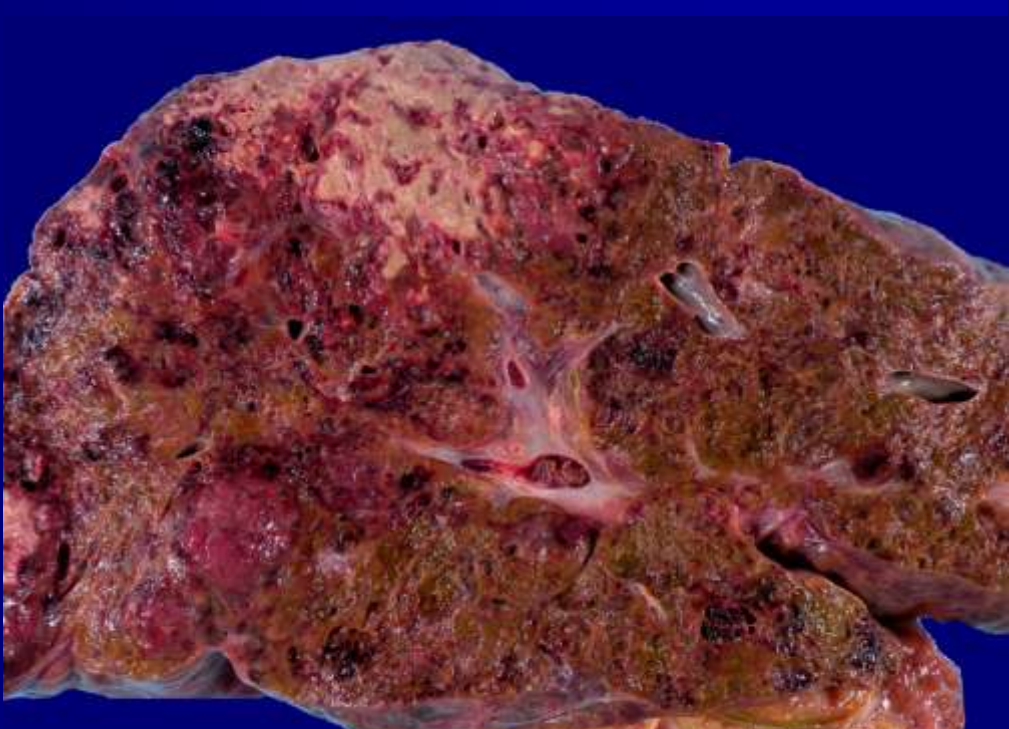
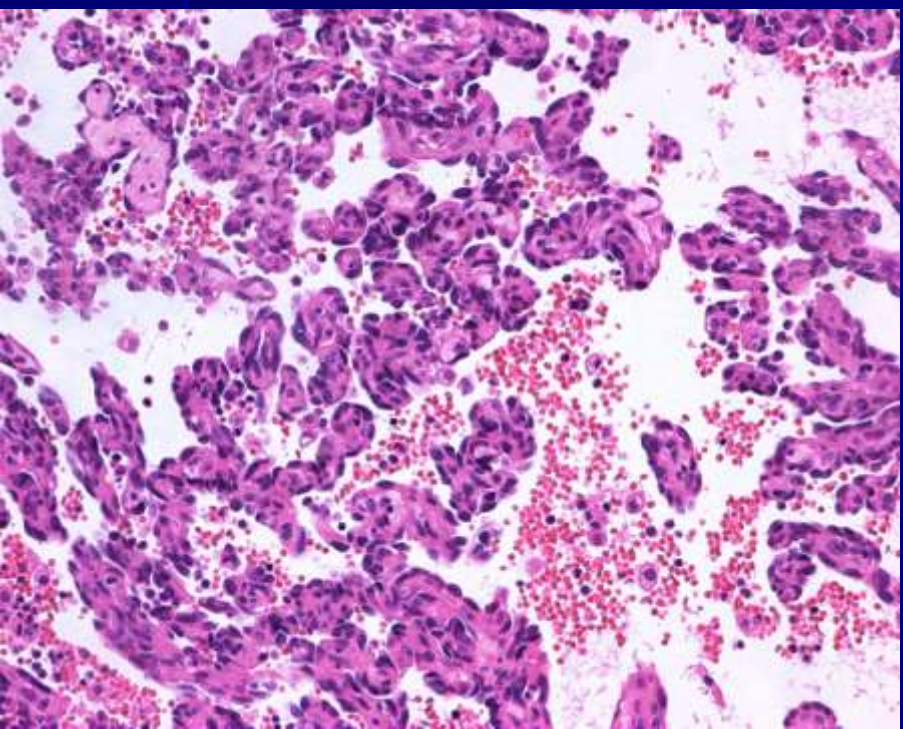
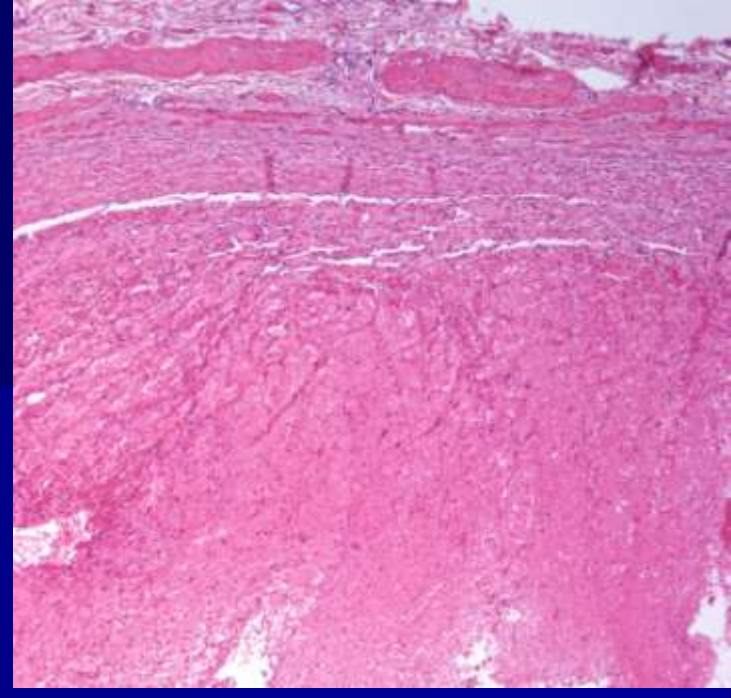


Budd-Chiari

Primario

Secundario

- Carcinoma hepatocelular, renal, adrenal, hemangiosarcoma, hemangioendotelioma epitelioides, sarcomas de vena cava inferior, mixoma de AD
- Otros (hidatidosis, HNF, traumas, etc.)



Makhlouf H:

**Epithelioid hemangioendothelioma
of the liver: a clinicopathologic study of
137 cases.**

Cancer 1999; 85:562-82.

Fukayama M, et al.

**Malignant epithelioid
hemangioendothelioma of the liver,
spreading through the hepatic veins.**

Virchows Arch A Pathol Anat Histopathol 1984; 404:275-87.

- Waish M.

Epithelioid hemangioendothelioma of the liver mimicking Budd-Chiari syndrome.

Arch Pathol Lab Med 1998; 122:846-48.

- Hayashi Y.

Epithelioid hemangioendothelioma with marked liver deformity and secondary Budd-Chiari syndrome. Pathological and radiological correlation.

Pathol Int 1999;49:547-52.

- Eckstein R.

Epithelioid hemangioendothelioma of the liver: report of two cases histologically mimicking veno-occlusive disease.

Pathology 1986; 18:459-62