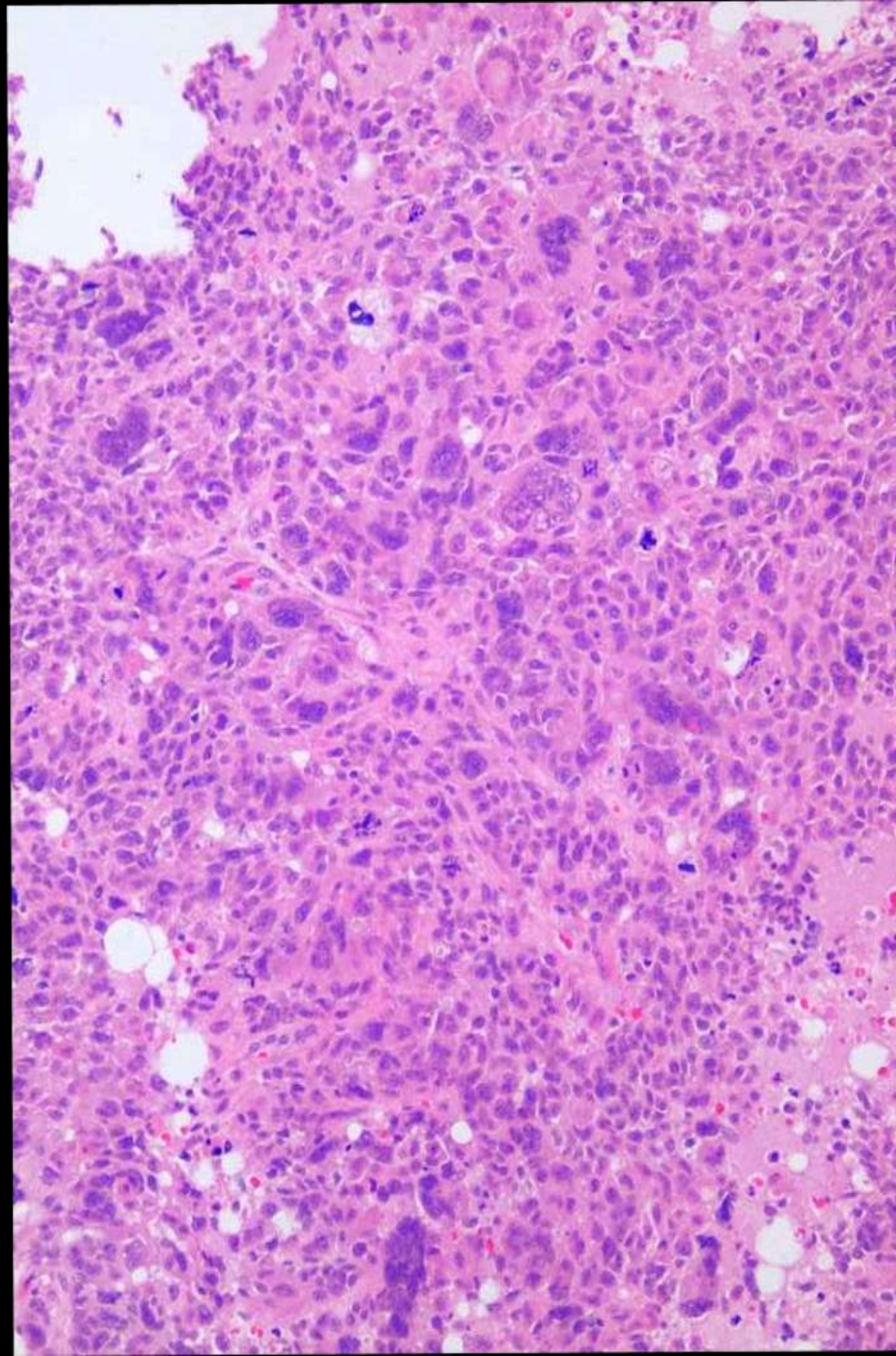
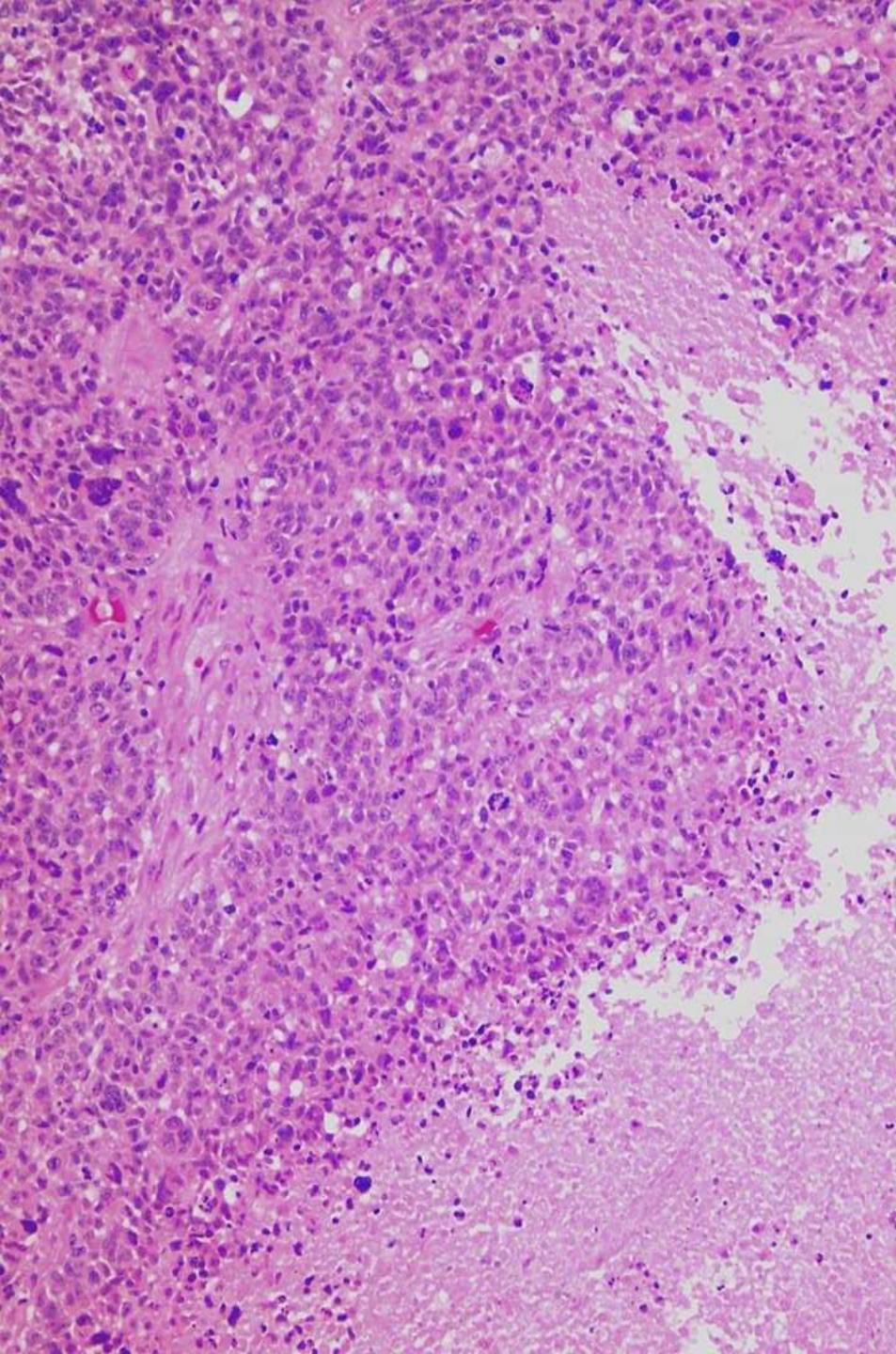
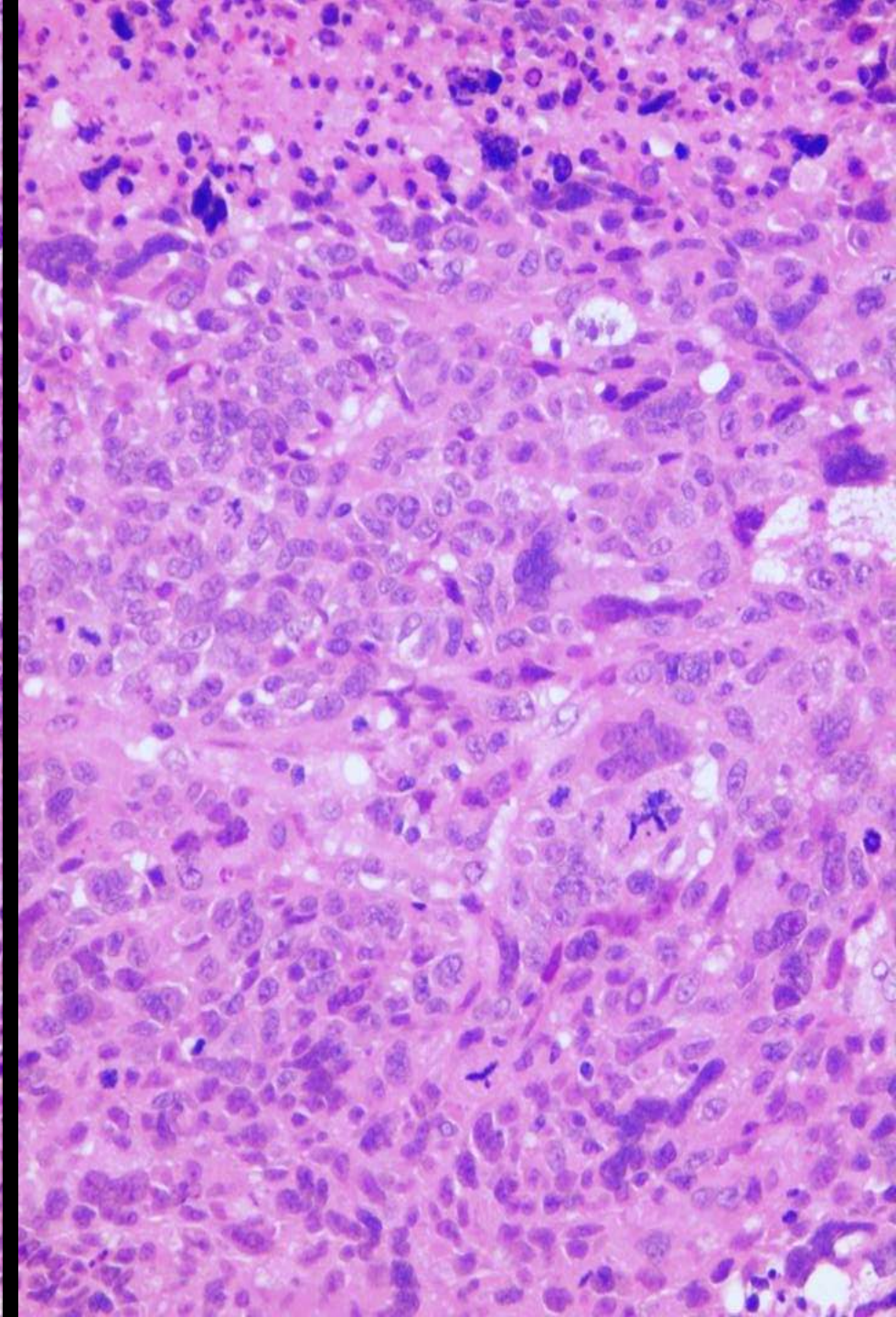
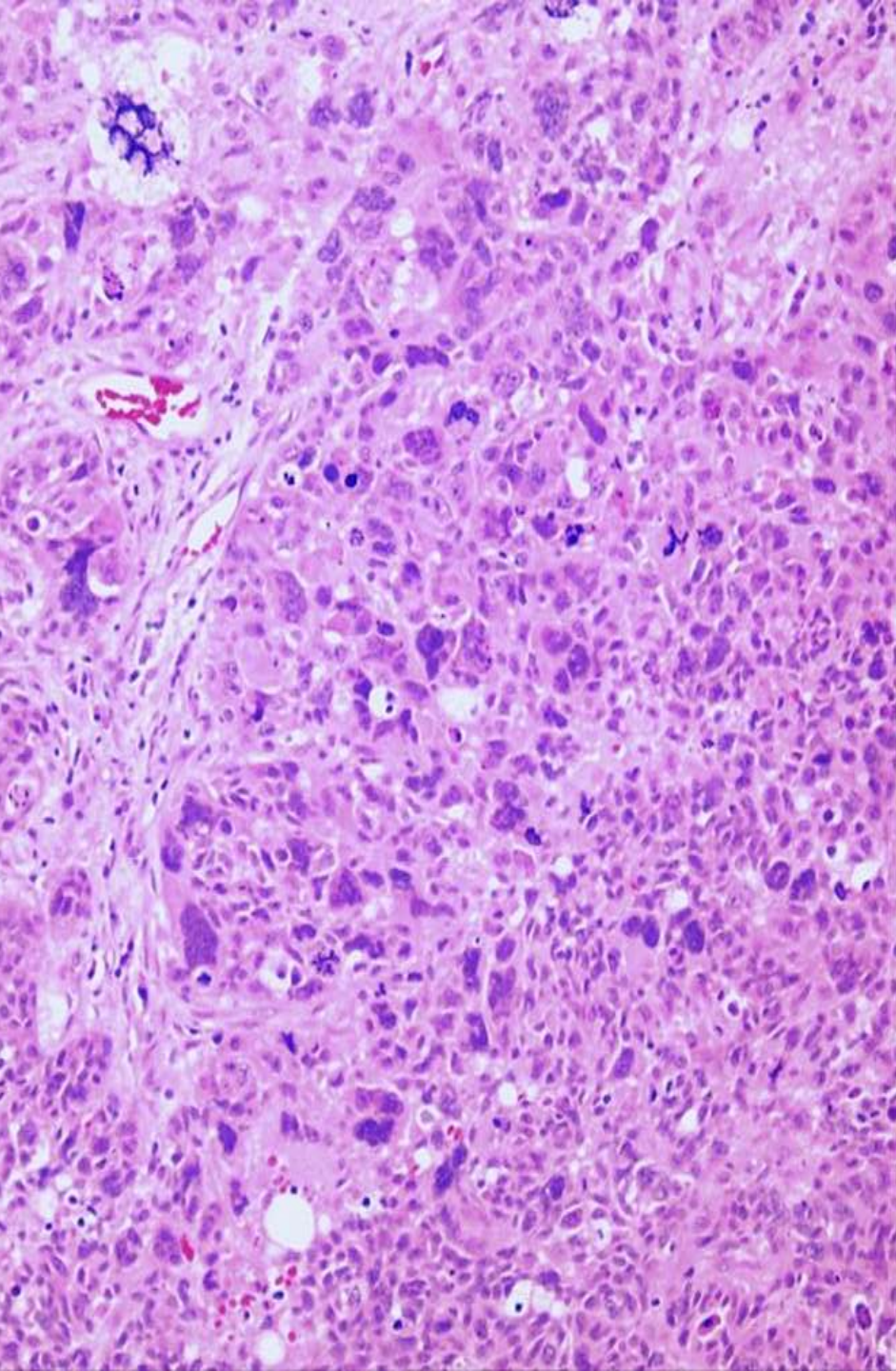
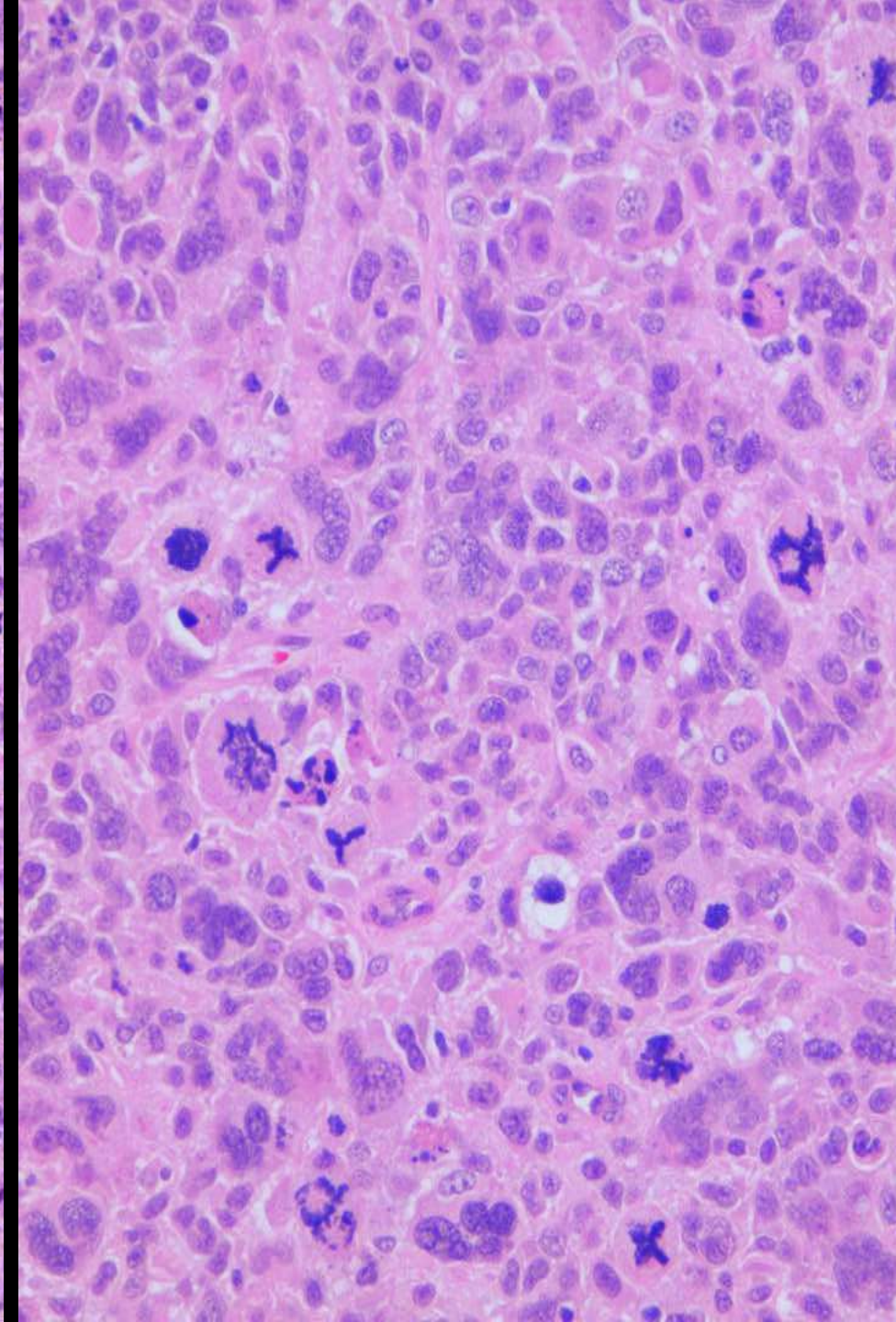
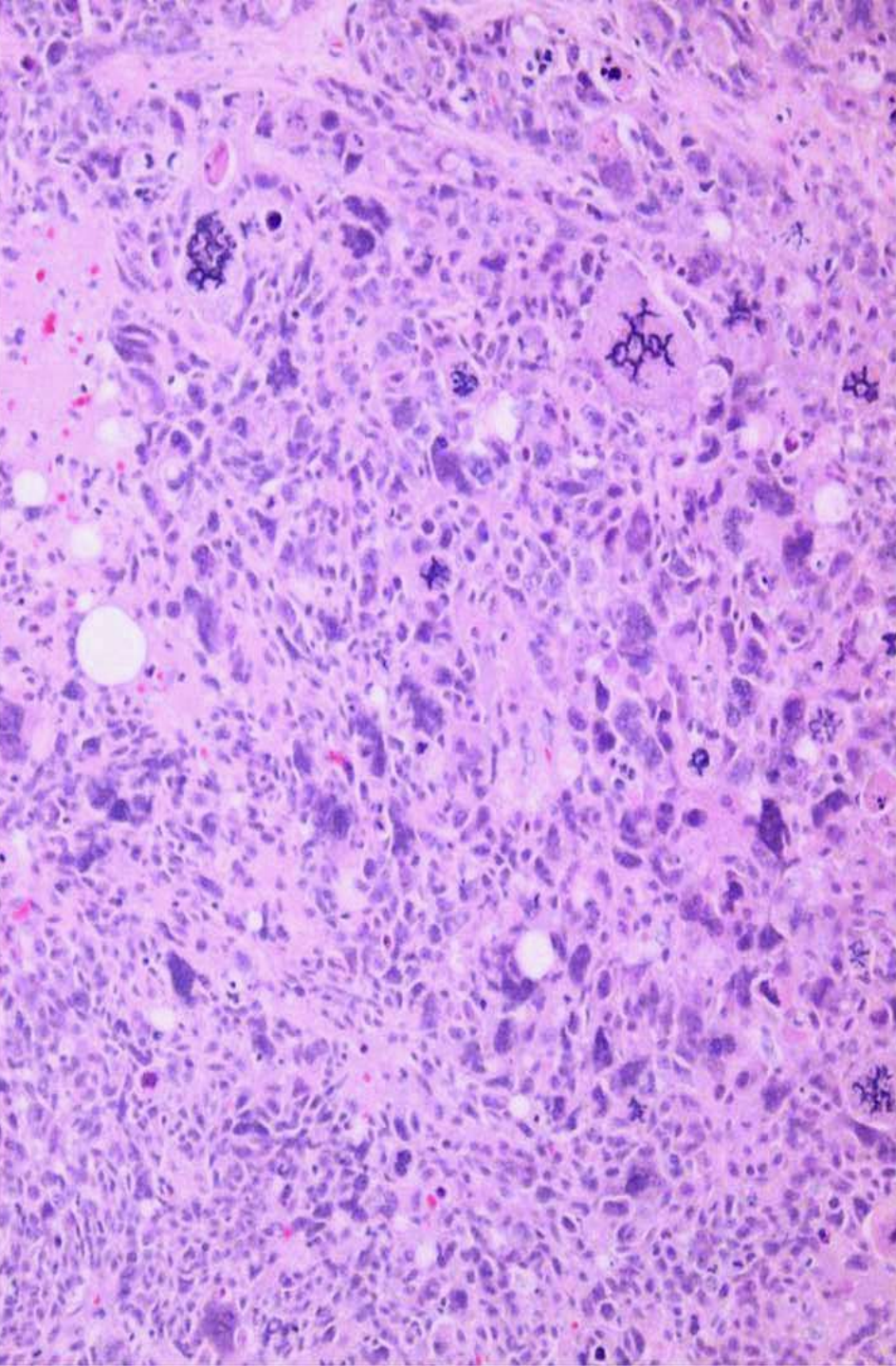


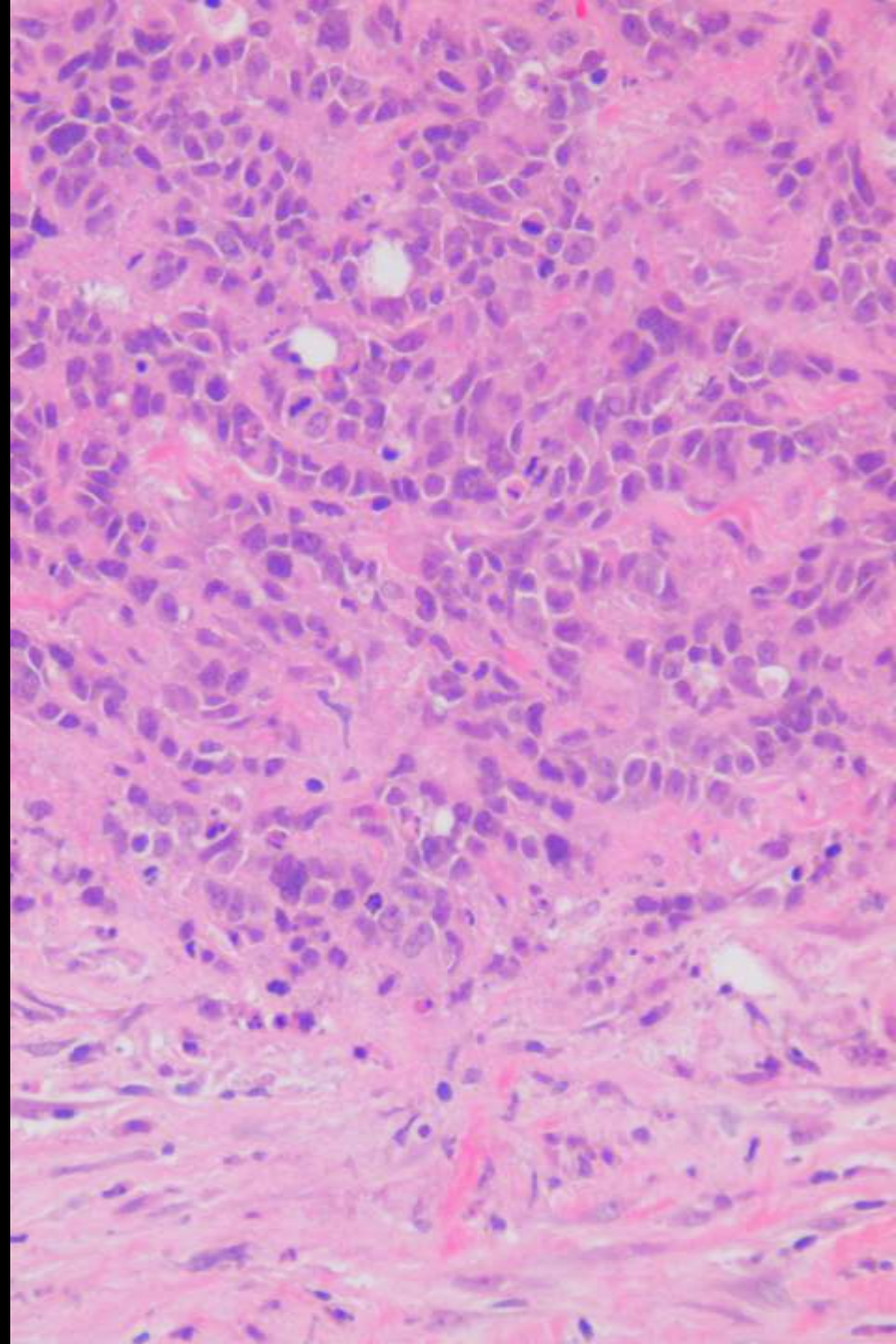
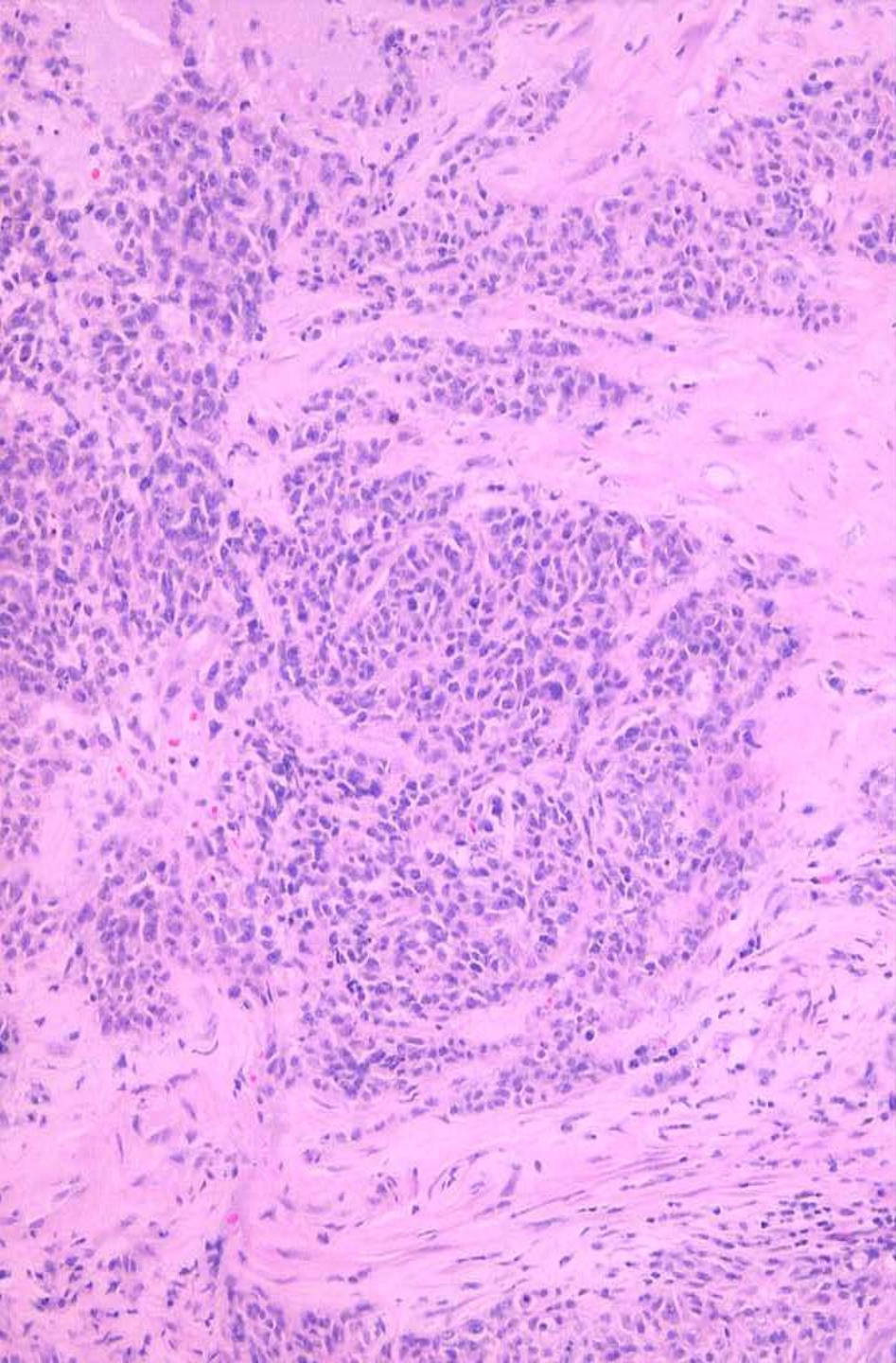
# Resumen clínico

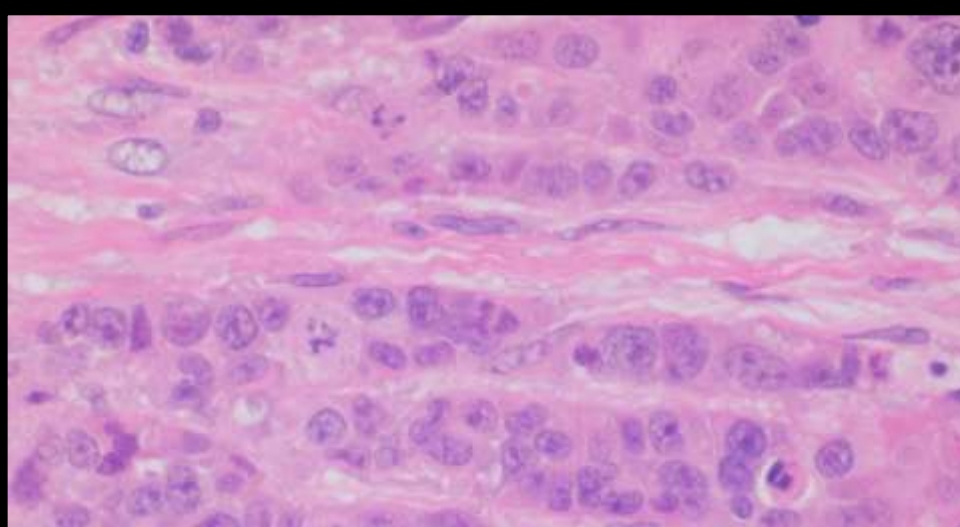
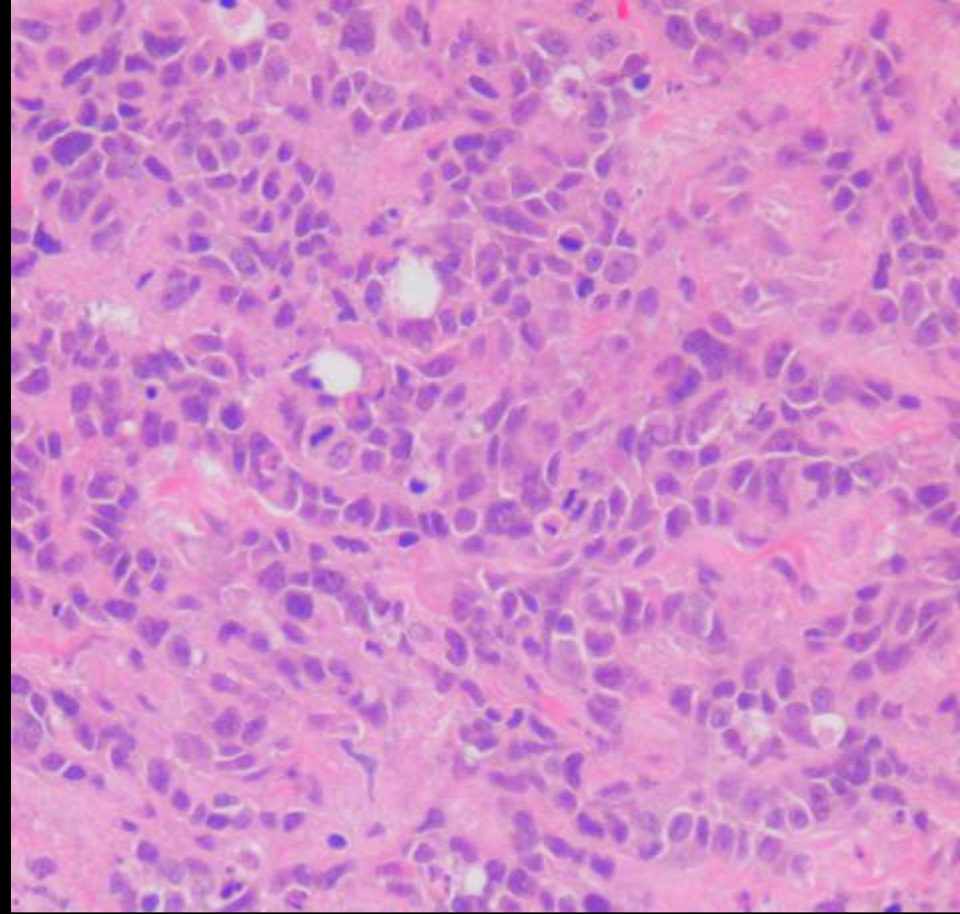
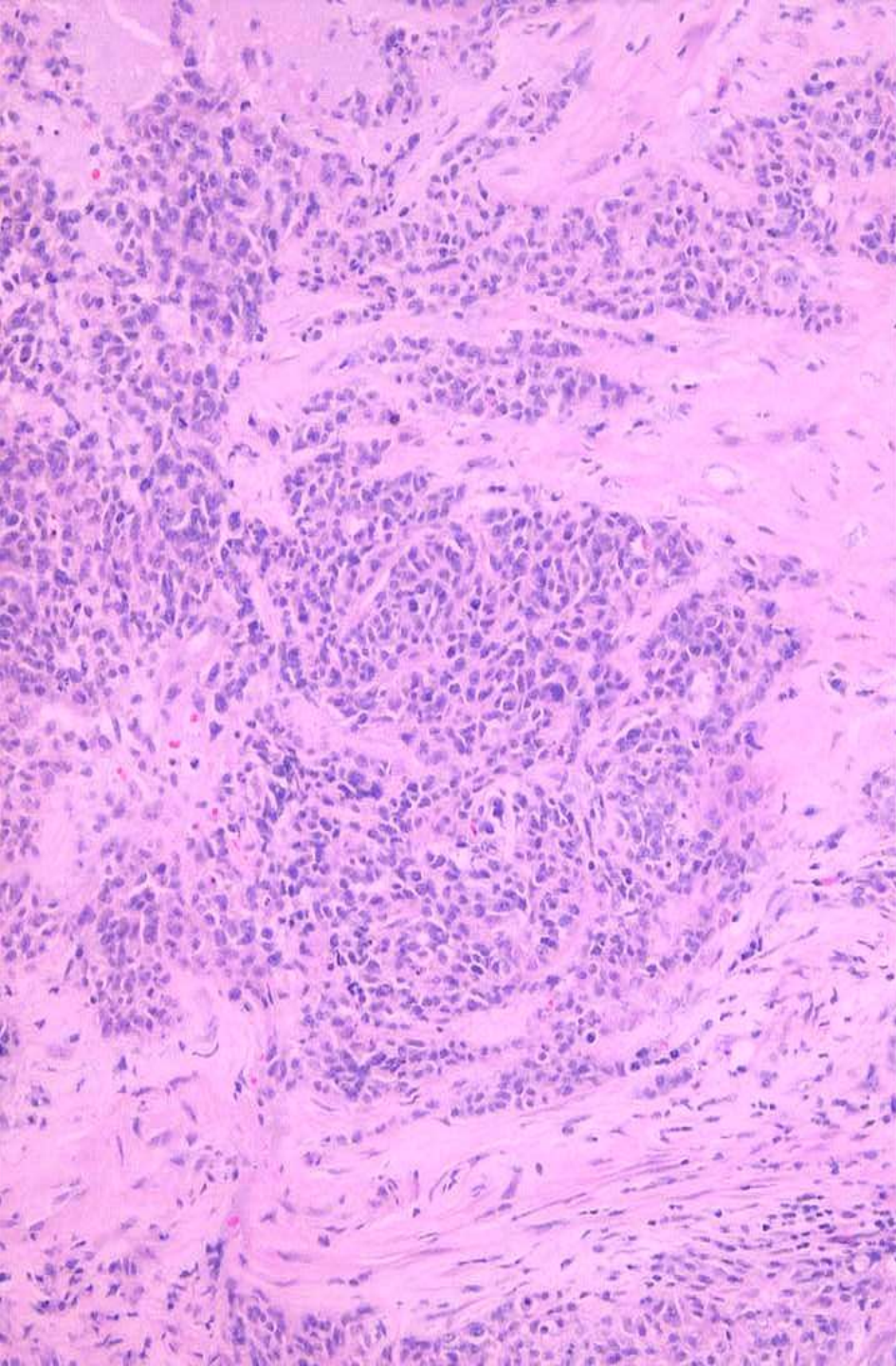
- **Mujer de 47 años**
- **Tumor en mama izquierda de 4 cm.**
- **Ganglios axilares palpables**
- **Biopsia con trucut con diagnóstico de carcinoma ductal infiltrante**
- **Mastectomía tipo Patey izquierda**

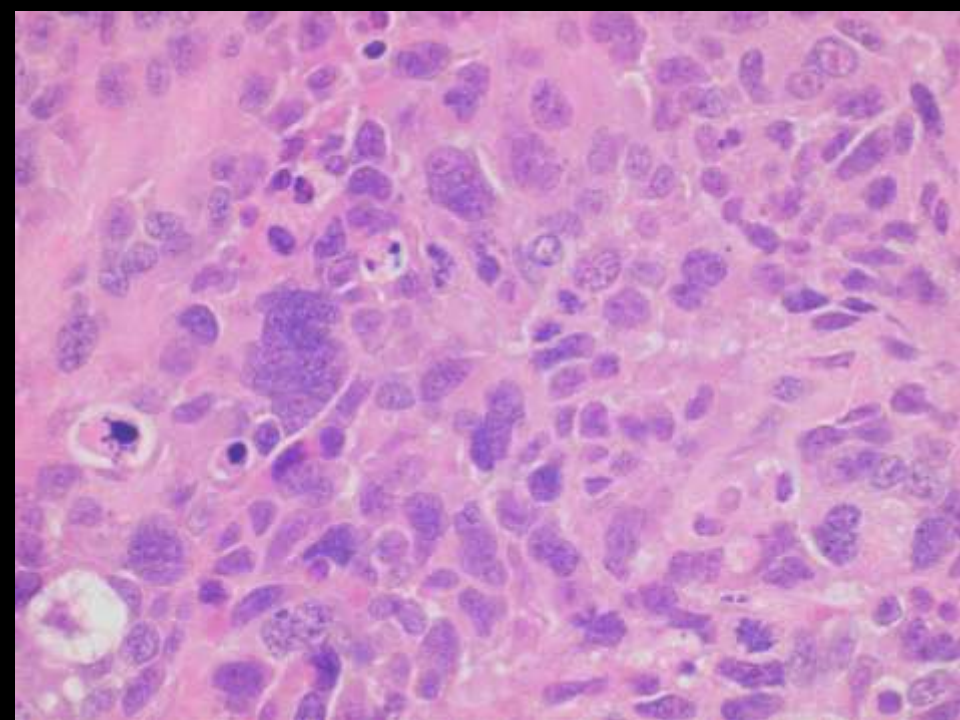
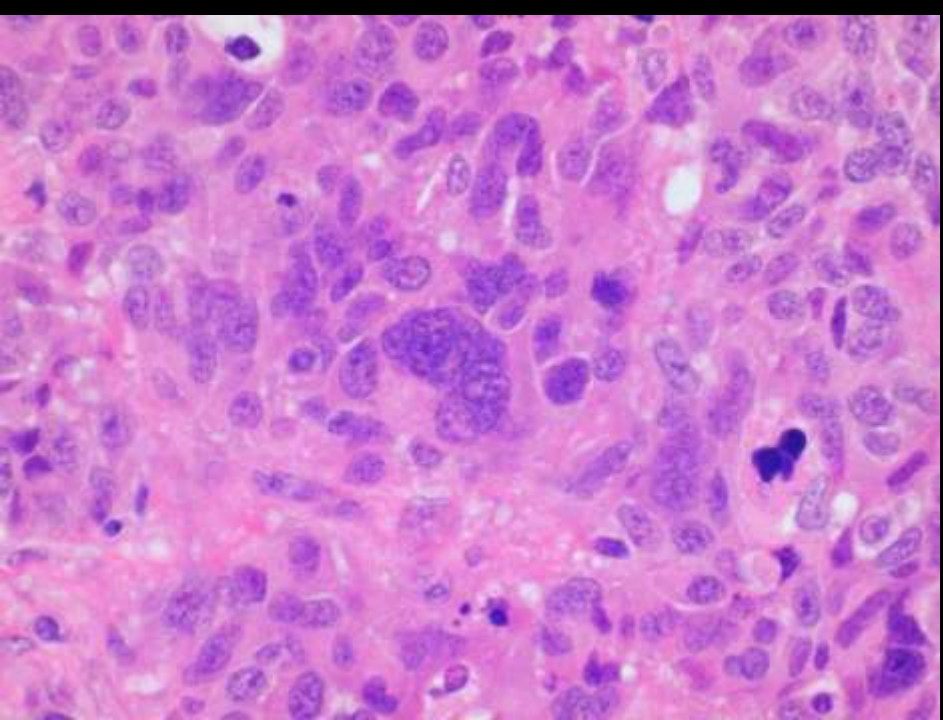
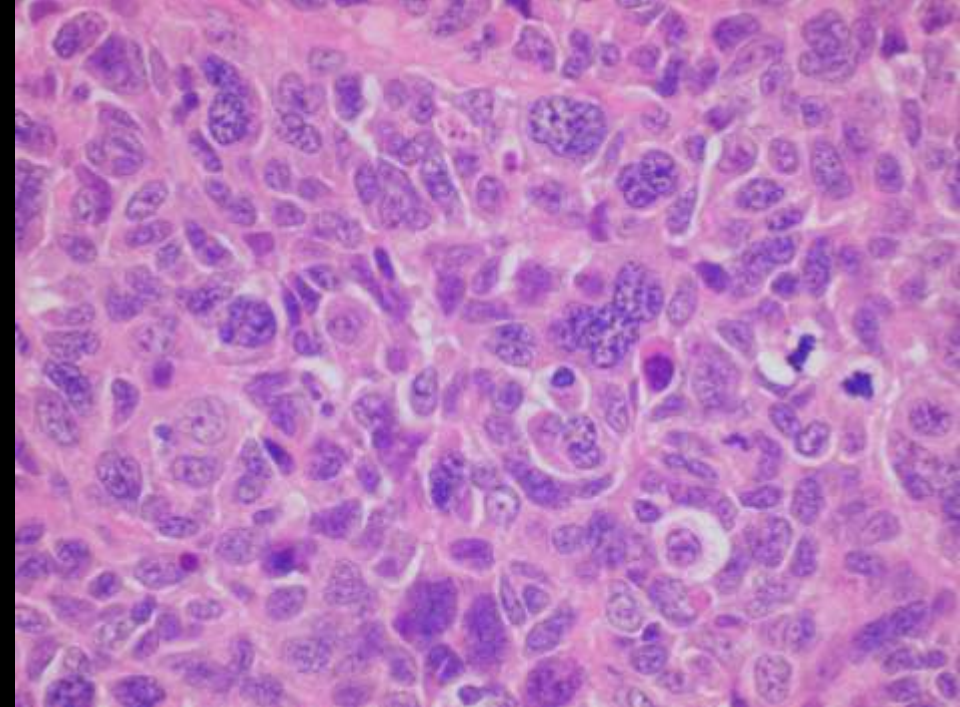
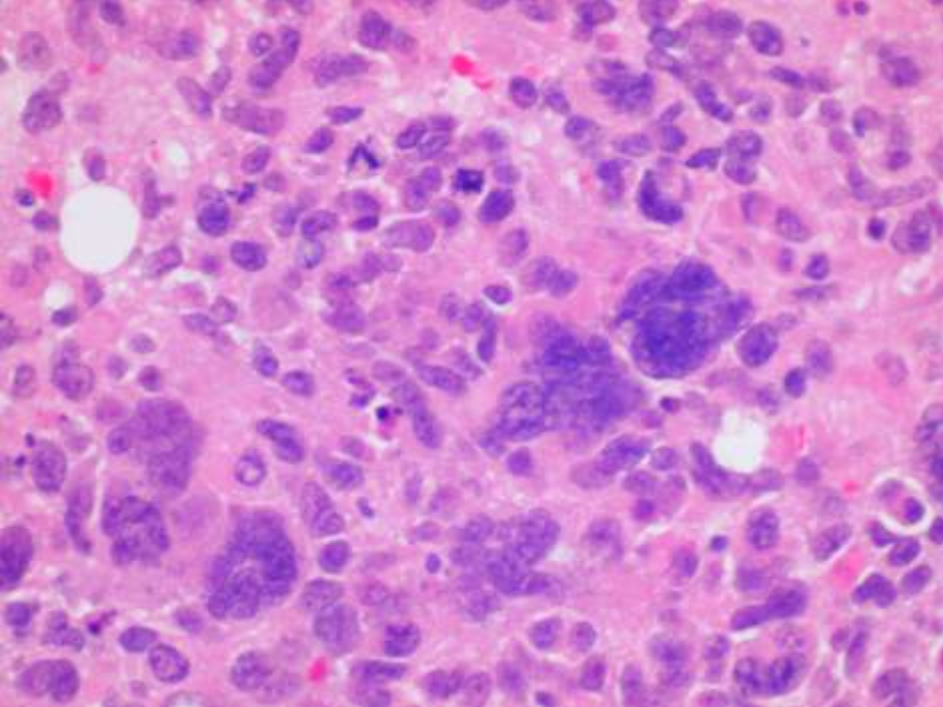


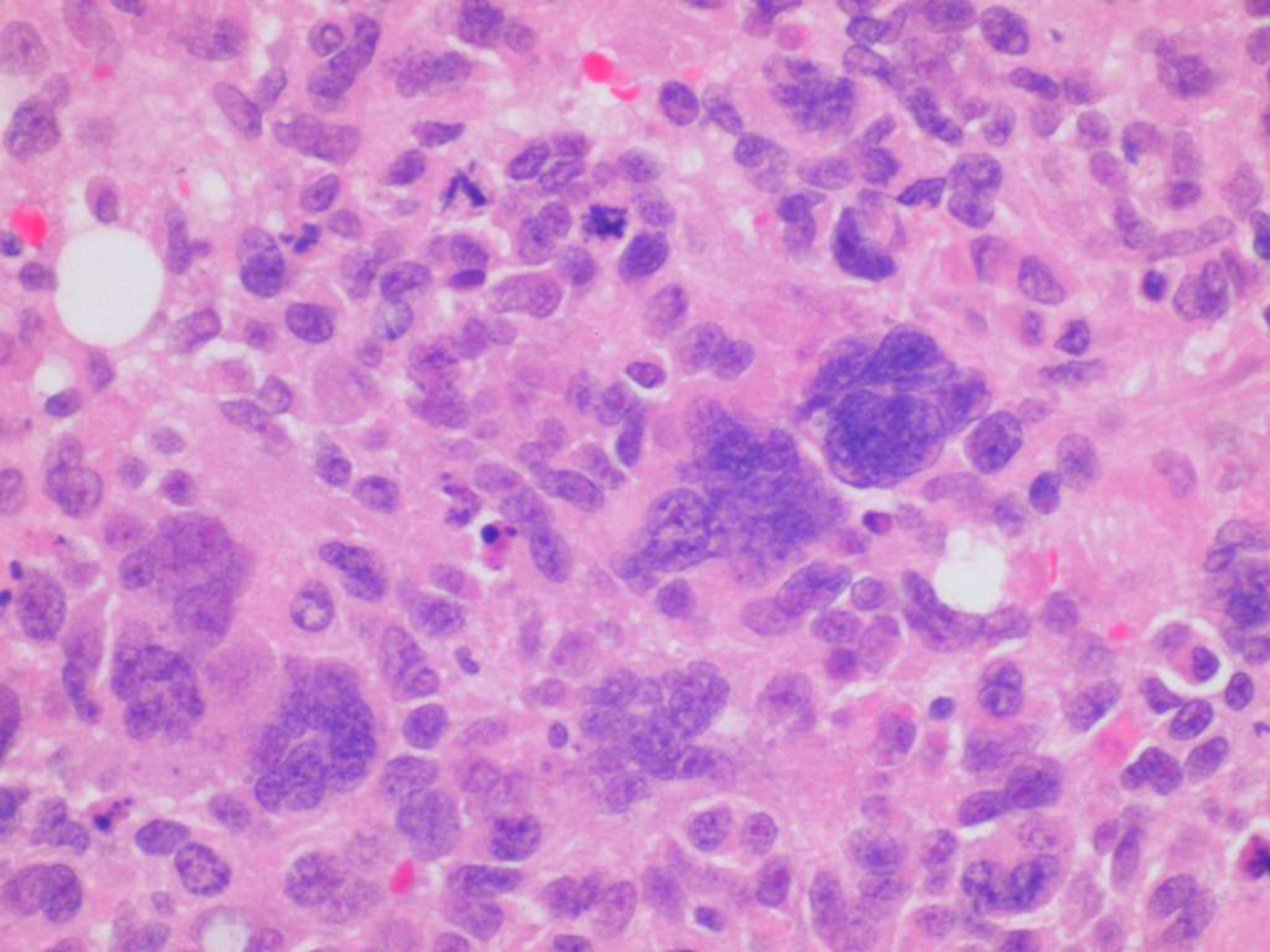














**Carcinoma ductal infiltrante  
pleomorfo de alto grado**

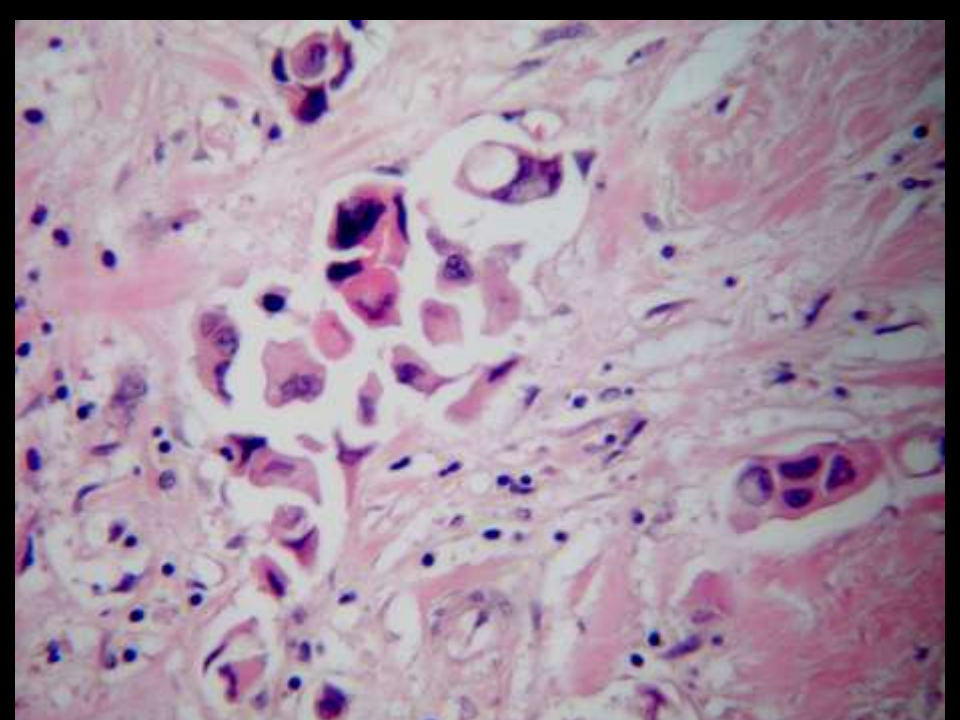
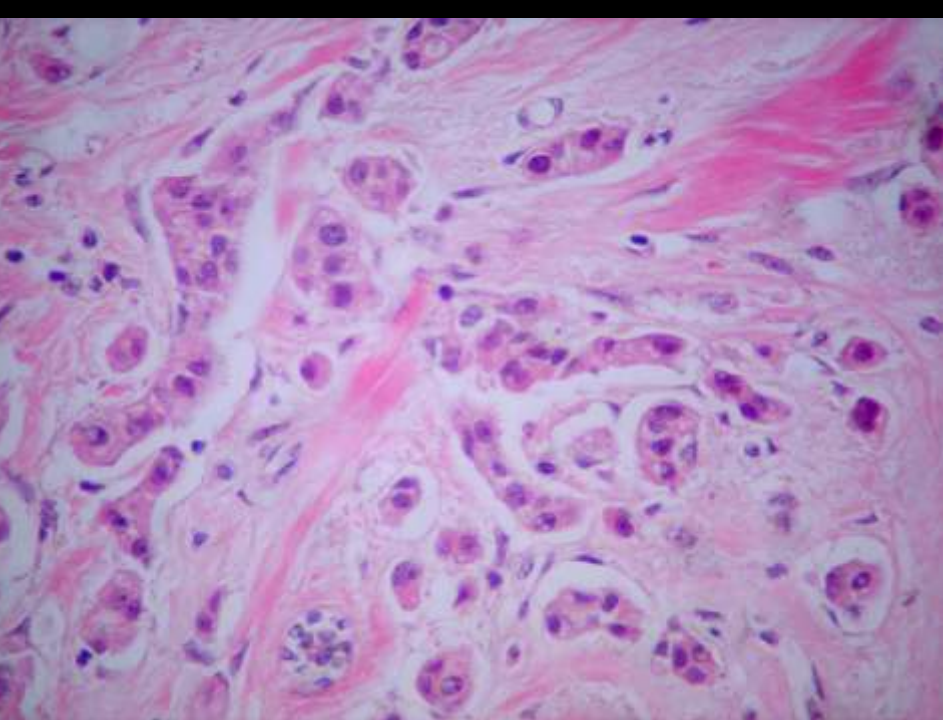
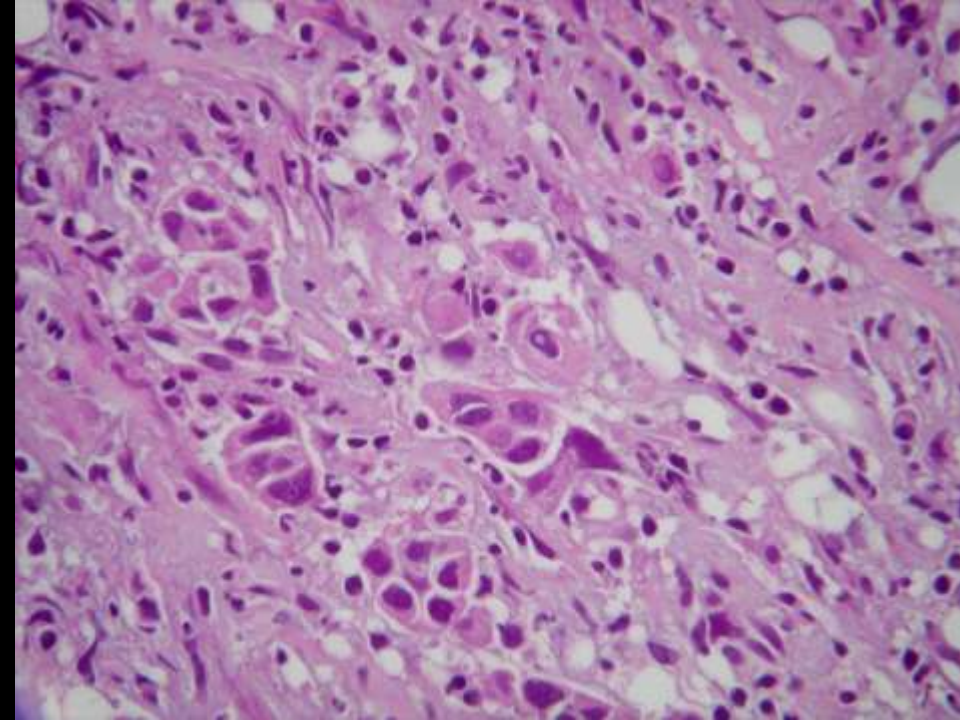
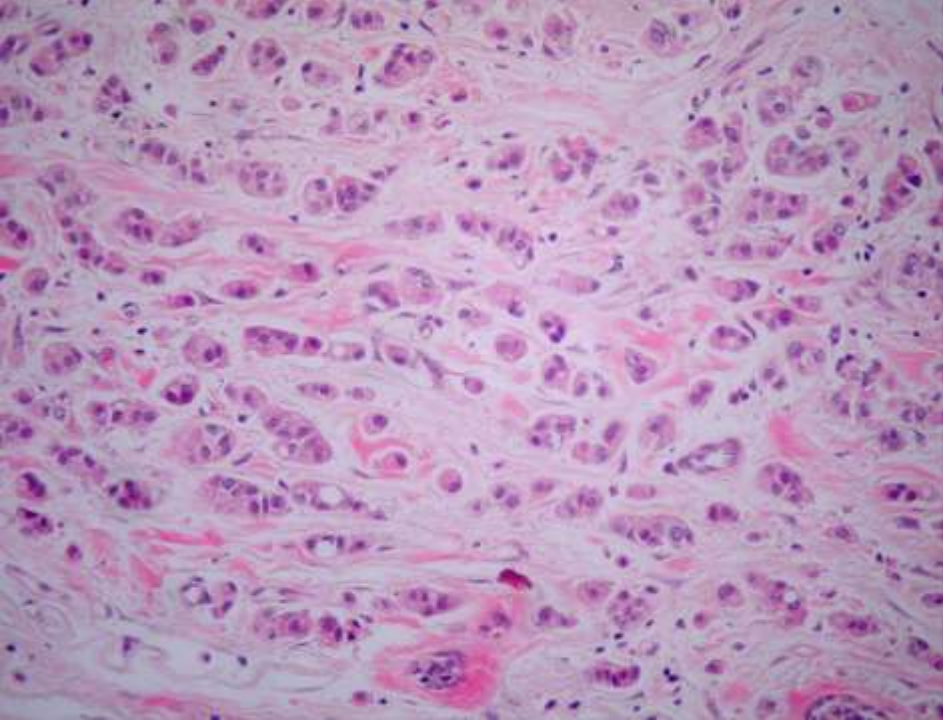
**+**

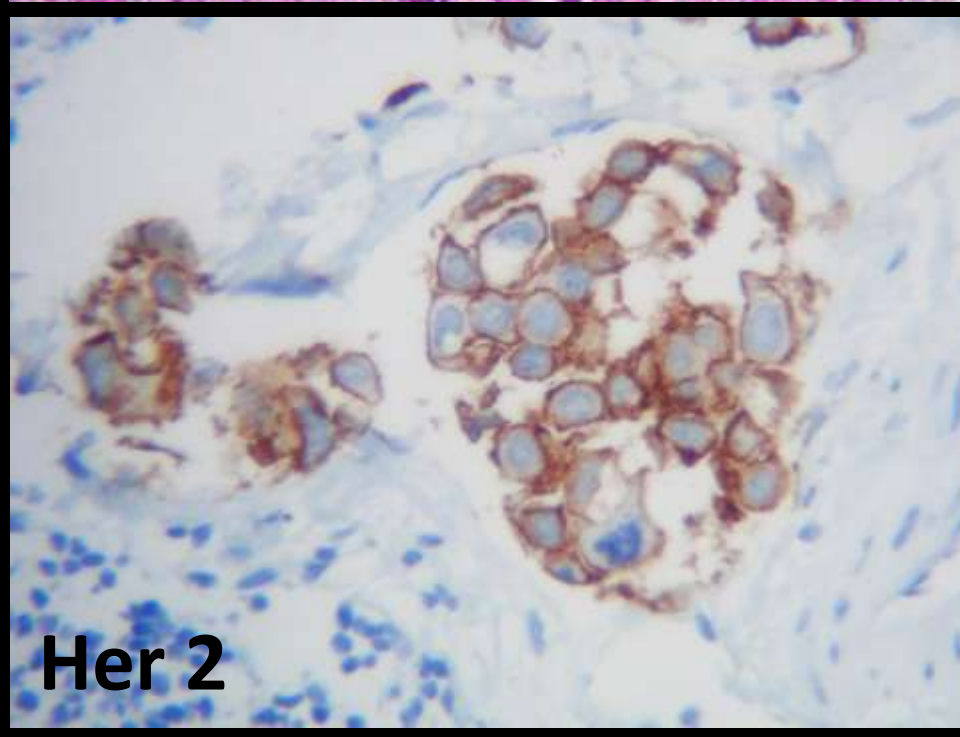
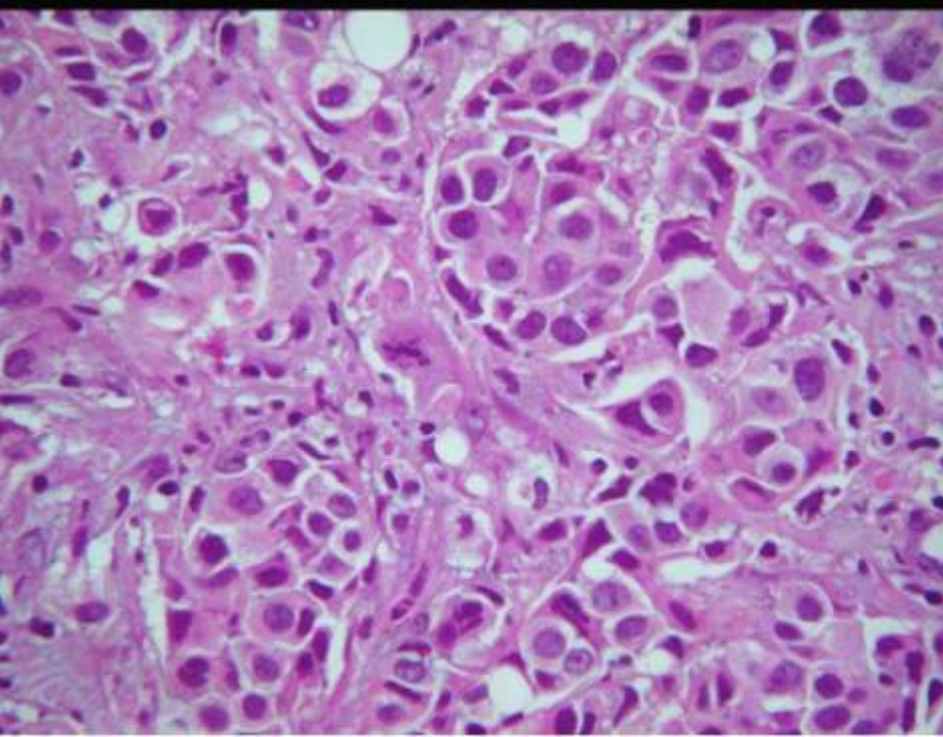
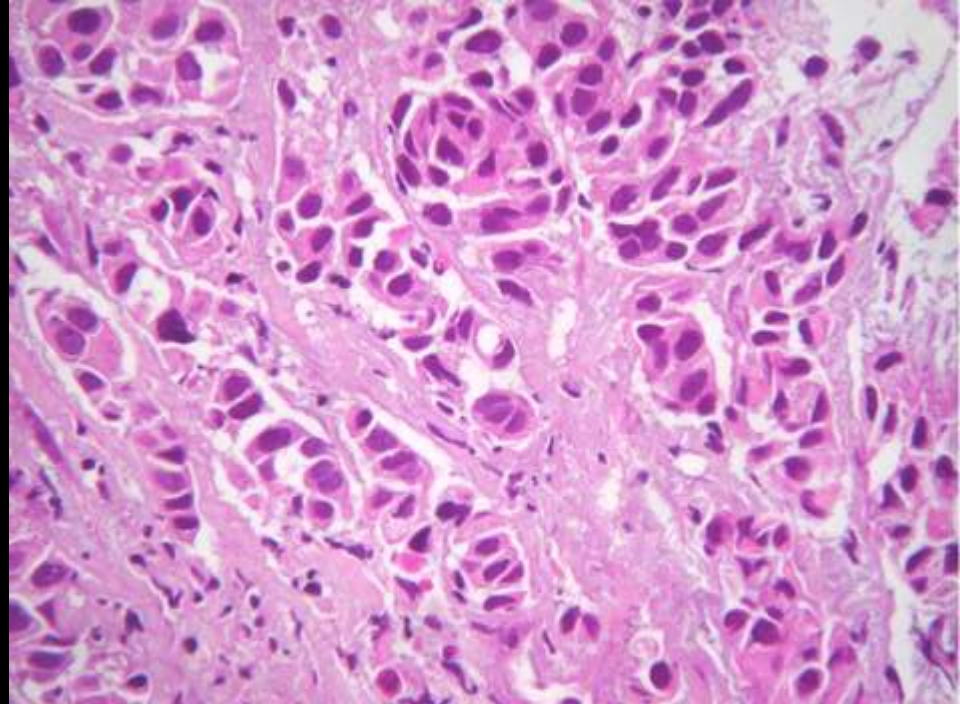
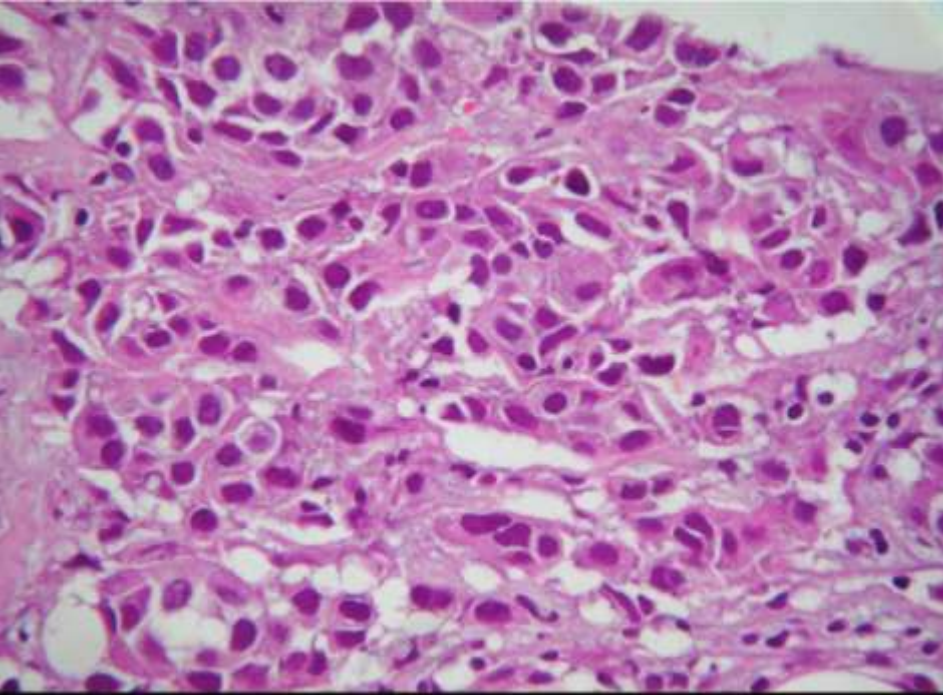
**Carcinoma lobulillar pleomórfico,  
invasor (alto grado)**

# Inmunofenotipo

- RE -
- RP -
- Her 2 Neg. (score:0)

**Ambos componentes**





**Pleomorphic carcinoma of the breast:  
clinicopathological  
analysis of 26 cases of an unusual high-grade  
phenotype of  
ductal carcinoma.**

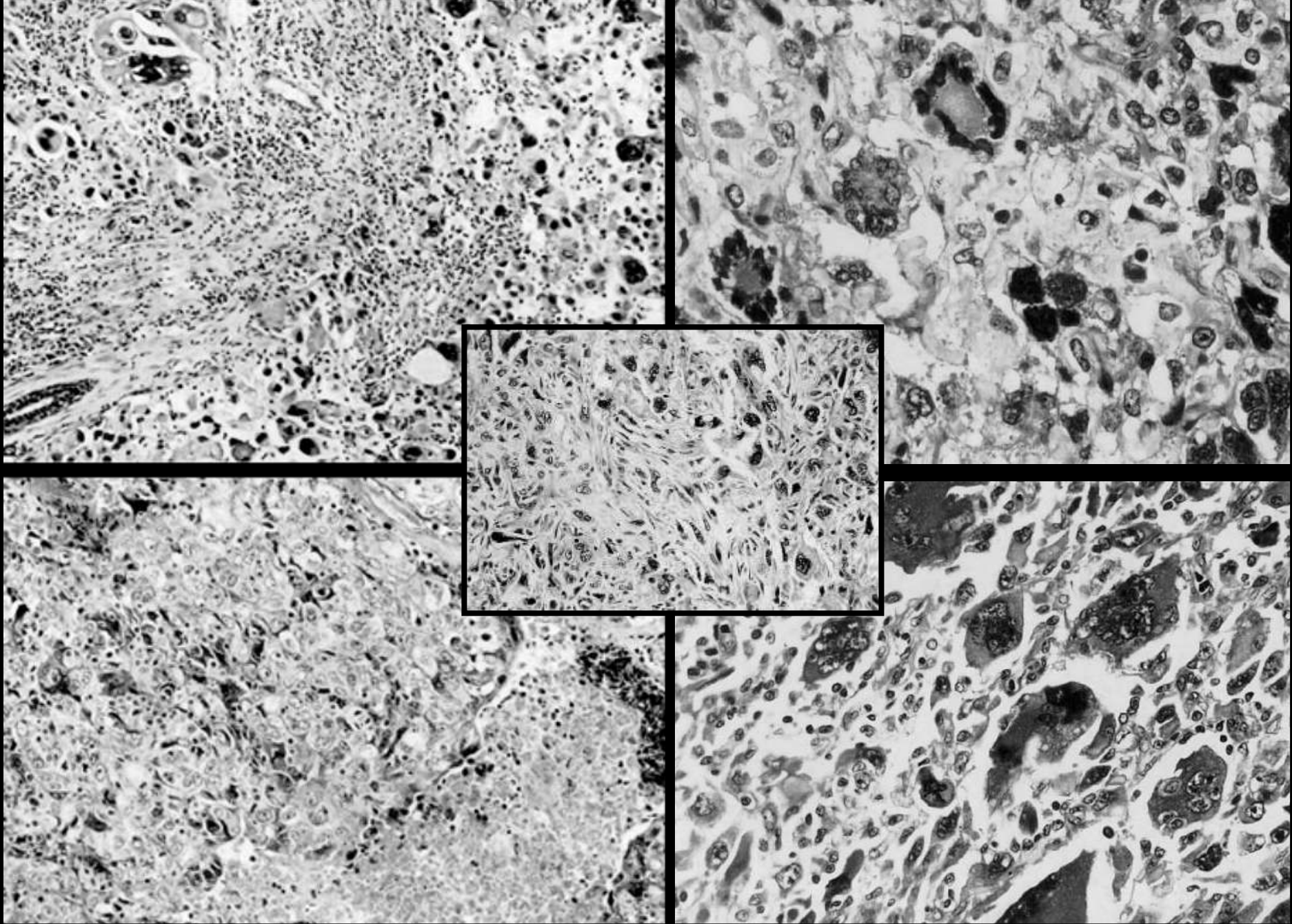
**Silver SA, Tavassoli FA.**

**Department of Gynecologic and Breast Pathology, Armed Forces Institute of  
Pathology, Washington, DC, USA.  
ssilver@mail.magee.edu**

# **Carcinoma ductal pleomórfico**

## **Histología**

- **Patrón sólido, nidos o cordones**
- **Células gigantes pleomórficas**
- **Marcado pleomorfismo nuclear**
- **Multinucleación**
- **Hipercromasia nuclear**
- **Irregularidad de la cromatina**
- **Nucléolos múltiples y prominentes**
- **Alto índice mitótico >20/10 HPF**
- **Puede encontrarse áreas escamoides o componente fusocelular**



*Silver SA, Tavassoli FA Histopathology 36(6):505, 2000*

ORIGINAL ARTICLE

---

# Pleomorphic Ductal Carcinoma of the Breast: Predictors of Decreased Overall Survival

*Christopher V. Nguyen, MD,\* Reynaldo Falcón-Escobedo, MD,† Kelly K. Hunt, MD,‡  
Khazi M. Nayeemuddin, MD, MPH,‡ Todd R. Lester, MD,\* Robyn K. Harrell, MD,§  
Roland L. Bassett, Jr, MS,§ and Michael Z. Gilcrease, MD, PhD\**

---

**Abstract:** The World Health Organization classification of tumors of the breast includes a rare variant of invasive ductal carcinoma termed pleomorphic carcinoma. This variant has marked nuclear pleomorphism (> 6-fold variation in nuclear size by definition, but often > 10-fold) and characteristically

**T**he World Health Organization (WHO) classification of tumors of the breast includes a rare variant of invasive ductal carcinoma termed pleomorphic carcinoma characterized by a “proliferation of pleomorphic and bizarre tumor giant cells comprising > 50% of the tumor cells in a background of adenocarcinoma or adenocarci-



